

HEAVY DUTY

TRUCKS AND TRAILERS



EXCEL
TRUCK GROUP®

ROOK
MOTOR COMPANY

FEBRUARY 2025

EXCEL
TRUCK GROUP®

ROOK
MOTOR COMPANY
A DIVISION OF EXCEL
TRUCK GROUP.

2023 FREIGHTLINER MT55 WALK IN VAN



**20' MORGAN OLSON • 6.6L 380 HP GASOLINE ENGINE
ALLISON 2205 TRANSMISSION
SWING REAR DOOR**

... \$88,888 ...



(3) NEW 2025 MACK AN64R SLEEPERS

**MP8 445 HP • mDRIVE TRANSMISSION
5 YR/500K MILE WARRANTY**

... \$159,900 FET INCLUDED ...

NEW 2025 MACK PINNACLE 48" SLEEPER



**STK #1195295
MP8 505 HP
12-SPD. MDRIVE
237" WB • 12/40K AXLES
DIFFERENTIAL LOCK
PREPPED FOR WET LINE KIT
\$170,500 FET INC.**

NEW 2024 MACK ANTHEM DAY CAB



**STK #1189755
MP8 445 HP
12-SPD. MDRIVE
209" WB
12/40K AXLES
\$164,900 FET INC.**

BRAND NEW 2024 & 2025 ISUZUS AVAILABLE



**2025 ISUZU FTR
CUMMINS ISB6.7 260 HP
ALLISON 2500RDS-P AUTO TRANS.
\$93,900**



**2024 ISUZU FTR
CUMMINS ISB 260 HP
ALLISON 2500RDS-P AUTO TRANS.
\$84,500**



**2024 ISUZU NPR-HD
ISUZU 6.6L 350 HP
AUTOMATIC TRANSMISSION
\$69,800**



**2025 ISUZU NRR
ISUZU 350 HP
ALLISON 1000RDS-P AUTO TRANS.
\$64,900**

Crook Motors - C2

EXCEL TRUCK GROUP

www.exceltg.com



Albemarle, NC • (800) 438-2260
 Charlotte, NC • (704) 597-1110
 Chesapeake, VA • (757) 424-3000
 Chester, VA • (804) 768-4600
 Roanoke, VA • (540) 777-7700
 Weyers Cave, VA • (540) 234-0999



MOTOR COMPANY
www.crookmotors.com

\$79,750

2019 Freightliner M2106 24' x 102" Aluminum Van, Cummins B6.7 240 HP, Allison 2500RDS Automatic Transmission, Approx. 92,736 Miles, Air Ride Suspension, 10,000# Front, 17,500# Rear, 26,000# GVWR, Aluminum Wheels, P/S, A/C, 255" WB, 3,500# Palfinger Tuckaway Lift Gate, Dual Row Horizontal #-Track, Solid Roof, Stk #1240451.....\$79,750



**2019
 24'
 Aluminum
 Van**

\$79,500

2022 Freightliner M2106 26' x 102" Aluminum Van, Cummins B6.7 280 HP, Allison 2500HS Auto Trans., Approx. 99,335 Miles, Air Ride Susp., 10,000# Front, 18,000# Rear, 26,000# GVWR, Aluminum/Steel Wheels, P/S, A/C, 270" WB, 2,500# Maxon Tuckaway Lift Gate, Translucent Roof, (1) Row E-Track, Stk #1234169.....\$79,500



**2022
 26'
 Aluminum
 Van**

\$74,500



**2018
 24'
 Crew Cab
 Aluminum
 Van**

2018 Freightliner M2106 24' x 102" Crew Cab Aluminum Van, Cummins B6.7 220 HP, Allison 2200RDS Auto Trans., Approx. 88,693 Miles, Air Ride Susp., 10,000# Front, 19,000# Rear, 26,000# GVWR, Steel Wheels, P/S, A/C, 278" WB, 3,000 # Maxon Tuckaway Lift Gate, Aluminum Roof, Aluminum Floor, (2) Rows E-Track, Stk #1241371.....\$74,500

\$74,500



**2020
 24'
 Aluminum
 Van**

2020 Freightliner M2106 24' x 96" Aluminum Van, DD 5.51L 240 HP, Allison 2200HS Automatic Transmission, Approx. 112,363 Miles, Air Ride Suspension, 10,000# Front, 19,000# Rear, 26,000# GVWR, Steel Wheels, P/S, A/C, 252" WB, 3,000# Rail Gate, Translucent Roof, Stk #1129001.....\$74,500

Crook Motors - C3

EXCEL TRUCK GROUP

www.exceltg.com



Albemarle, NC • (800) 438-2260
 Charlotte, NC • (704) 597-1110
 Chesapeake, VA • (757) 424-3000
 Chester, VA • (804) 768-4600
 Roanoke, VA • (540) 777-7700
 Weyers Cave, VA • (540) 234-0999



MOTOR COMPANY
www.crookmotors.com

\$72,500

**2022
 26'
 Aluminum
 Van**



2022 Freightliner M2106 26' x 102" Aluminum Van, Cummins B6.7 280 HP, Allison 2500HS Automatic Transmission, Approx. 134,387 Miles, Air Ride Suspension, 10,000# Front, 19,000# Rear, 26,000# GVWR, Aluminum/Steel Wheels, P/S, A/C, 270" WB, 2,500# Maxon Tuckaway Lift Gate, Stk #1240254.....\$72,500

\$69,500

**2017
 26'
 Aluminum
 Van**



2017 Freightliner M2106 26' x 102" Aluminum Van, Cummins ISB6.7 260 HP, Allison 2500HS Auto Trans., Approx. 47,109 Miles, Air Ride Susp., 10,000# Front, 19,000# Rear, 26,000# GVWR, Steel Wheels, P/S, A/C, 270" WB, Solid Roof, (2) Rows E-Track, Plywood Lined, Stk #1238020.....\$69,500

\$59,750

**2018
 20'
 Aluminum
 Van**



2018 Freightliner M2106 20' x 96" Aluminum Van, Cummins ISB, Allison 2500RDS Automatic Transmission, Approx. 159,328 Miles, Air Ride Suspension, 10,000# Front, 17,500# Rear, 26,000# GVWR, P/S, A/C, 228" WB, Stk #1233928.....\$59,750

\$49,750

**2014
 26'
 Crew Cab
 Aluminum
 Van**



2014 Freightliner M2106 Crew Cab 26' x 102" Aluminum Van, Cummins ISB 320 HP, Allison 2100RDS Automatic Transmission, Approx. 174,287 Miles, Air Ride Suspension, 26,000# GVWR, P/S, A/C, 289" WB, 3,300# Tuckaway Lift Gate, Alum. Roof, (2) Rows E-Track, Stk #17093.....\$59,750

\$42,500

**2017
 26'
 Aluminum
 Van**



2017 Freightliner M2106 26' x 102" Aluminum Van, Cummins ISB6.7 260 HP, Allison 2500HS Auto Trans., Air Ride Susp., 12,000# Front, 21,000# Rear, Steel Wheels, P/S, A/C, 270" WB, 5,500# Maxon Rail Gate, Solid Roof, (2) Rows E-Track, Wood Floor, Stk #1240402.....\$42,500

\$21,500

**2012
 26'
 Aluminum
 Van**



2012 Freightliner M2106 26' x 102" Aluminum Van, Cummins ISB6.7 250 HP, Allison 2500HS Automatic Transmission, Approx. 274,473 Miles, Air Ride Suspension, 12,000# Front, 21,000# Rear, Steel Wheels, Power Steering, A/C, 270" WB, 2,500# Anthony Tuckaway Lift Gate, Stk #1233335.....\$21,500

Crook Motors - C4

EXCEL TRUCK GROUP

www.exceltg.com



Albemarle, NC • (800) 438-2260
 Charlotte, NC • (704) 597-1110
 Chesapeake, VA • (757) 424-3000
 Chester, VA • (804) 768-4600
 Roanoke, VA • (540) 777-7700
 Weyers Cave, VA • (540) 234-0999



MOTOR COMPANY
 www.crookmotors.com

\$89,750



**2017
 26'
 Reefer
 Van**

2017 International 4300SBA 26' x 102" Aluminum Reefer Van, Carrier Supra 860 Unit (642 Hours), Cummins ISB 260 HP, **Allison 2500RDS Automatic Transmission, Approx. 98,156 Miles, Air Ride Suspension, 25,999# GVWR, Power Steering, A/C, 272" WB, Electric Over Hyd. Dock Levelers, Stk #17212.....\$89,750**

\$79,750



**2018
 24'
 Reefer
 Van**

2018 Freightliner M2106 24' x 102" Aluminum Reefer Van, Carrier Unit (15,133 Hours, 30 Gallon Steel Fuel Tank), Cummins L9 300 HP, **Allison 3000HS Auto Trans., Approx. 145,893 Miles, Air Ride Susp., 14,320# Front, 40,000# Rear, P/S, A/C, Flat Non-Skid Floor, Diff Lock, 4,400# Maxon Rail Gate, Stk #1215523.....\$79,750**

\$79,750



**2018
 18'
 Reefer
 Van**

2018 Freightliner M2106 18' x 96" Aluminum Reefer Van, Carrier Stealth Supra 760 Unit (6,009 Hours), Cummins B6.7 240 HP, **Allison 2500HS Auto Trans., Approx. 105,711 Miles, Air Ride Susp., 26,000# GVWR, Steel Wheels, P/S, A/C, Extruded Aluminum Floor, Pull Out Ramp, Curbside Door, Stk #1220922.....\$79,750**

\$79,750



**2016
 26'
 Reefer
 Van**

2016 Freightliner M2106 26' x 102" Aluminum Reefer Van, Thermo King T-880R Whisper Unit, Cummins ISL 270 HP, **Allison 3000HS Auto Trans., Approx. 101,178 Miles, Air Ride Susp., 52,000# GVWR, Steel Wheels, P/S, A/C, 270" WB, 5,500# Maxon Rail Gate, (4) Rows Horizontal Log Post, 18" Aluminum Rub Rail, Stk #1239993.....\$79,750**

\$69,750

2019 16' Reefer Van



2019 Isuzu NPR-XD 16' x 96" Aluminum Reefer Van, Carrier Supra 660 Unit (2,330 Hours), Isuzu Diesel 210 HP, **Auto Trans., Approx. 72,184 Miles, Spring Susp., 16,000# GVWR, P/S, A/C, Aluminum Non-Skid Floor, (2) Rows E-Track, Electric Standby, Waltco Tuckaway Lift Gate, Rollup Rear Door, Stk #1215519.....\$69,750**

\$69,750

2016 24' Reefer Van



2016 Freightliner M2106 24' x 102" Aluminum Reefer Van, Thermo King T-880R Whisper Unit (3,527 Hours), Cummins ISL 270 HP, **Allison 3000HS Automatic Transmission, Approx. 146,869 Miles, Air Ride Suspension, 12,000# Front, 40,000# Rear, P/S, A/C, 252" WB, Pull Out Ramp, Locking Rears, Stk #1225711.....\$69,750**

Crook Motors - C5

\$39,000

2020 26' Aluminum Van



2017 Freightliner M2106 22' Aluminum Reefer Van, Thermo King Unit, Cummins ISB 240 HP, **Allison 2500HS Auto Trans., Approx. 334,855 Miles, Air Ride Susp., 26,000# GVWR, Steel Wheels, Power Steering, A/C, Roll Up Rear Door, Stk #1179854.....\$39,000**

EXCEL
TRUCK GROUP®

ROOK
MOTOR COMPANY
A DIVISION OF EXCEL
TRUCK GROUP.

Motorhome Service & Repair

We Service All Makes!

✓ Preventative
Maintenance

✓ Body Work
and Repairs

✓ Water and
Electrical
Hookups at
Select
Locations



Schedule Your Visit Today!
ExcelTruckGroup.com/Motorhome-And-RV-Service

EXCEL
TRUCK GROUP
www.exceltg.com



Albemarle, NC • (800) 438-2260
 Charlotte, NC • (704) 597-1110
 Chesapeake, VA • (757) 424-3000
 Chester, VA • (804) 768-4600
 Roanoke, VA • (540) 777-7700
 Weyers Cave, VA • (540) 234-0999

ROOK
MOTOR COMPANY
www.crookmotors.com

\$99,500



2017 Freightliner 114SD Cab and Chassis, Detroit DD13 350 HP, Allison 4000RDS Automatic Transmission, Approx. 238,372 Miles, Air Ride Suspension, 20,000# Front, 46,000# Rear, 66,000# GVWR, P/S, A/C, Stk #1240157.....\$99,500

2017
 Cab
 and
 Chassis

\$79,750



2019 Freightliner M2106 Cab and Chassis, Cummins L9 300 HP, Allison 3000RDS Automatic Transmission, Approx. 94,717 Miles, Air Ride Suspension, 12,000# Front, 21,000# Rear, P/S, A/C, 204" WB, Stk #1230926.....\$79,750

2019
 Cab
 and
 Chassis

\$79,750



2019
 Cab
 and
 Chassis

2019 Freightliner M2106 Cab and Chassis, Cummins L9 300 HP, Allison 3000RDS Automatic Transmission, Approx. 82,278 Miles, Air Ride Suspension, 12,000# Front, 21,000# Rear, P/S, A/C, 204" WB, Stk #1230932.....\$79,750

\$79,750



2017
 Cab
 and
 Chassis

2017 Kenworth T800 Cab and Chassis, Cummins ISX12 385 HP, Eaton Ultrashift Plus Automatic Transmission, Approx. 262,714 Miles, Air Ride Suspension, 14,320# Front, 40,000# Rear, All Aluminum Wheels, Power Steering, A/C, 240" WB, 168" CT, 288" EOF, PTO, Stk #1211429.....\$79,750

Crook Motors - C7

EXCEL TRUCK GROUP

www.exceltg.com



Albemarle, NC • (800) 438-2260
 Charlotte, NC • (704) 597-1110
 Chesapeake, VA • (757) 424-3000
 Chester, VA • (804) 768-4600
 Roanoke, VA • (540) 777-7700
 Weyers Cave, VA • (540) 234-0999



MOTOR COMPANY
 www.crookmotors.com

\$79,750

2014
 Cab
 and
 Chassis



2014 Freightliner M2112 Cab and Chassis, Detroit DD13 410 HP, **FO-14E310C-LAS Ultra Shift Automatic Transmission, Approx. 284,766 Miles, Air Ride Suspension, 14,600# Front, 40,000# Rear, 54,600# GVWR, Aluminum Wheels, P/S, A/C, 187" WB, 123" CA, Double Frame, Stk #1239497.....\$79,750**

\$76,500

2018
 Cab
 and
 Chassis



2018 Freightliner M2106 Cab and Chassis, Cummins L9 350 HP, **Allison 3000RDS Automatic Transmission, Approx. 144,777 Miles, Air Ride Suspension, 12,000# Front, 40,000# Rear, Aluminum Wheels, 252" WB, Power Steering, A/C, 189" CA, 285" EOF, Stk #1233551.....\$76,500**

\$69,750

2019
 Cab
 and
 Chassis



2019 Freightliner M2106 Cab and Chassis, Cummins L9 270 HP, **Allison 3000RDS Auto Trans., Approx. 87,565 Miles, Air Ride Suspension, 12,000# Front, 21,000# Rear, P/S, A/C, 222" WB, 159" CA, Stk #1223403.....\$69,750**

\$69,750

2018
 Cab
 and
 Chassis



2018 Freightliner M2106 Cab and Chassis, Cummins L9 350 HP, **Allison 3000HS Automatic Transmission, Approx. 161,000 Miles, Air Ride Susp., 14,600# Front, 40,000# Rear, Power Steering, A/C, 249" WB, 185" CA, Stk #1232335.....\$69,750**

\$69,750

2016
 Cab
 and
 Chassis



2016 Freightliner M2106 Cab and Chassis, Cummins ISL 350 HP, **Allison 3000RDS Automatic Transmission, Approx. 141,829 Miles, Air Ride Susp., 12,000# Front, 40,000# Rear, Steel Wheels, Power Steering, A/C, 252" WB, 184" CA, Suspension Dump, Stk #1224454.....\$69,750**

\$54,750

2017
 Cab
 and
 Chassis



2017 Freightliner M2106 Cab and Chassis, Cummins ISB 325 HP, **Allison 3000RDS Automatic Transmission, Approx. 143,114 Miles, Air Ride Susp., 12,000# Front, 21,000# Rear, Aluminum Wheels, 226" WB, P/S, A/C, Diff Lock, Stk #1235590.....\$54,750**

Crook Motors - C8

EXCEL TRUCK GROUP

www.exceltg.com



Albemarle, NC • (800) 438-2260
 Charlotte, NC • (704) 597-1110
 Chesapeake, VA • (757) 424-3000
 Chester, VA • (804) 768-4600
 Roanoke, VA • (540) 777-7700
 Weyers Cave, VA • (540) 234-0999



MOTOR COMPANY
www.crookmotors.com

\$49,750



**2018
 Cab
 and
 Chassis**

2018 Freightliner M2106 Cab and Chassis, Cummins B6.7 325 HP, **Allison 3000RDS Automatic Transmission**, **Approx. 182,535 Miles**, Air Ride Suspension, 12,000# Front, 21,000# Rear, Power Steering, A/C, 216" WB, 152" CA, **Stk #1237795.....\$49,750**

\$49,750



**2012
 Cab
 and
 Chassis**

2012 Kenworth T370 Cab and Chassis, Paccar PX8 330 HP, **Allison 3000RDS Automatic Transmission**, **Approx. 173,846 Miles**, Air Ride Suspension, 12,000# Front, 40,000# Rear, 185" CA, 255" WB, P/S, A/C, **Stk #1233245.....\$49,750**

\$49,750



**2017
 Cab
 and
 Chassis**

2017 Freightliner M2106 Cab and Chassis, Cummins ISB 325 HP, **Allison 3000RDS Auto Trans.**, **Approx. 195,315 Miles**, Air Ride Susp., 12,000# Front, 21,000# Rear, All Aluminum Wheels, P/S, A/C, 226" WB, 160" CA, Backup Camera, **Stk #1229031.....\$49,750**

\$46,500



**2012
 Cab
 and
 Chassis**

2012 Kenworth T370 Cab and Chassis, Paccar PX8 330 HP, **Allison 3000HS Automatic Transmission**, **Approx. 109,118 Miles**, Air Ride Suspension, 13,200# Front, 40,000# Rear, 192" CA, 296" EOF, 260" WB, Power Steering, A/C, Double Frame, No Rear Window, Aluminum Tanks, **Stk #1235314.....\$46,500**

\$39,750



**2017
 Cab
 and
 Chassis**

2017 Freightliner M2106 Cab and Chassis, Cummins ISB 6.7 325 HP, **Allison 2500RDS Automatic Transmission**, **Approx. 196,184 Miles**, Air Ride Suspension, 10,000# Front, 19,000# Rear, 26,000# GVWR, Steel Wheels, Power Steering, A/C, 252" WB, 185" CA, 283" EOF, **Stk #1241118.....\$39,750**

\$38,750



**2010
 Cab
 and
 Chassis**

2010 Kenworth T370 Cab and Chassis, Paccar PX8 285 HP, **Allison 3000RDS Automatic Transmission**, **Approx. 197,455 Miles**, Air Ride Susp., 12,000# Front, 21,000# Rear, 33,000# GVWR, 150" CA, 217" WB, P/S, A/C, **Stk #1239500.....\$38,750**

Crook Motors - C9

EXCEL
TRUCK GROUP

www.exceltg.com



Albemarle, NC • (800) 438-2260
Charlotte, NC • (704) 597-1110
Chesapeake, VA • (757) 424-3000
Chester, VA • (804) 768-4600
Roanoke, VA • (540) 777-7700
Weyers Cave, VA • (540) 234-0999



MOTOR COMPANY
www.crookmotors.com

\$139,750

**2016
18'
Quad Axle
Dump**



2016 Volvo VHD 18' Quad Axle Steel Dump, Volvo D11 385 HP, Allison 4500RDS Automatic Transmission, Approx. 279,505 Miles, Volvo T Ride Suspension, 20,000# Front, 40,000# Rear, (2) 11,020# Steerable Lift Axles, Aluminum and Steel Wheels, 232" WB, Power Steering, A/C, Slant Gate, 42" Sides, 8" Boards, 50" Side Height, Electric Tarp, Full Locking Rears, Stk #1233314.....\$139,750

\$59,750

**2016
20'
Flatbed
Dump**



2018 Freightliner M2106 20' x 102" Steel Flatbed Dump, Cummins B6.7 250 HP, FRO-14210C 10-Speed Transmission, Approx. 124,580 Miles, 12,000# Front, 21,000# Rear, 33,000# GVWR, Air Ride Suspension, Aluminum Wheels, Power Steering, A/C, Air Suspension Dump, Under Bed Toolbox, 50 Gallon Aluminum Tank, Stk #1239221.....\$59,750

\$49,500

**2007
17'
Steel
Dump**



2007 Sterling LT9500 17' Steel Dump, Mercedes MBE 460 HP, RTO-16908LL Trans., Approx. 367,921 Miles, Tuf Trac Suspension, 18,000# Front, 40,000# Rear, 58,000# GVWR, Power Steering, A/C, 210" WB, Pintle Hitch, 45" Sides, 10" Board, Electric Tarp, Stk #1233511.....\$49,500

Crook Motors - C10

EXCEL
TRUCK GROUP

www.exceltg.com



Albemarle, NC • (800) 438-2260
Charlotte, NC • (704) 597-1110
Chesapeake, VA • (757) 424-3000
Chester, VA • (804) 768-4600
Roanoke, VA • (540) 777-7700
Weyers Cave, VA • (540) 234-0999



MOTOR COMPANY
www.crookmotors.com

\$119,500

**COMING
SOON!**

2019 Western Star 4700 23-1/2' x 102" Flatbed with Princeton Hookup, Cummins L9 300 HP, Allison 3000RDS Automatic Transmission, Approx. 232,985 Miles, Air Ride Suspension, 14,600# Front, 40,000# Rear, 54,600# GVWR, P/S, A/C, (9) Slide Winches, (1) Steel Storage Box, **Stk #1242350**.....
.....\$119,500

**2019
23-1/2' Flatbed
with
Princeton
Hookup**

\$114,500



2018 Freightliner M2106 24' x 102" Steel Flatbed with Moffett Hookup, Cummins L9 300 HP, Allison 3000RDS Automatic Transmission, Approx. 133,710 Miles, Air Ride Suspension, 14,700 Front, 40,000# Rear, P/S, A/C, (8) Winches and Straps, Steel Floor, Dual 50 Gallon Aluminum Tanks, **Stk #1240452**.....\$114,500

**2018
24'
Flatbed
with
Moffett
Hookup**

\$109,500



**2016
25' Flatbed
with
Moffett
Hookup**

2016 Freightliner 108SD 25' x 102" Tri-Axle Flatbed with Moffett Hookup, Cummins ISL 370 HP, Allison 3000RDS Automatic Transmission, Approx. 196,055 Miles, Tuf Trac Suspension, 20,000# Front, 40,000# Rear, 68,000# GVWR, 12,350# Steerable Lift Axle, P/S, A/C, (12) Slide Winches and Straps, Double Framed, Full Locking Rears, (2) Aluminum Storage Boxes, **Stk #1237703**.....\$109,500

\$107,500



**2016
25' Flatbed
with
Moffett
Hookup**

2016 Freightliner 108SD 25' x 102" Tri-Axle Flatbed with Moffett Hookup, Cummins ISL 370 HP, Allison 3000RDS Automatic Transmission, Approx. 289,654 Miles, Tuf Trac Suspension, 20,000# Front, 40,000# Rear, 68,000# GVWR, 12,350# Steerable Lift Axle, Power Steering, A/C, (12) Winches, Double Framed, Full Locking Rears, **Stk #1240693**.....\$107,500

Crook Motors - C11

EXCEL TRUCK GROUP

www.exceltg.com



Albemarle, NC • (800) 438-2260
 Charlotte, NC • (704) 597-1110
 Chesapeake, VA • (757) 424-3000
 Chester, VA • (804) 768-4600
 Roanoke, VA • (540) 777-7700
 Weyers Cave, VA • (540) 234-0999



MOTOR COMPANY
www.crookmotors.com

\$89,750

**2017
 25' Flatbed
 with
 Moffett
 Hookup**



2017 Freightliner M2106 25' x 102" Steel Flatbed with Moffett Hookup, Cummins ISL 350 HP, Allison 3000HS Automatic Transmission, Approx. 167,567 Miles, Air Ride Suspension, 16,000# Front, 44,000# Rear, 60,000# GVWR, P/S, A/C, (6) Slide Winches and Straps, Full Locking Rears, (1) Steel Storage Box, **Stk #1237708.....\$89,750**

\$89,750

**2012
 24' Flatbed
 with
 Hiab Boom**



2012 Mack GU813 24' Tri-Axle Flatbed w/Hiab Boom, Mack MP7 395 HP, RT-LO-16913A 13-Speed Trans., Approx. 360,457 Miles, Camelback Suspension, 20,000# Front, 46,000# Rear, 16,000# Rigid Rear Lift Axle, Power Steering, A/C, 275" WB, Pintle Hitch w/Glad-hands, Remote, (2) Hydraulic Outriggers, Double Frame, **Stk #1203891.....\$89,750**

\$89,750

**2018
 28'
 Steel
 Flatbed**



2018 Freightliner M2106 28' x 102" Steel Flatbed, Cummins L9 300 HP, Allison 3000HS Automatic Transmission, Approx. 86,194 Miles, Air Ride Suspension, 14,600# Front, 40,000# Rear, Power Steering, A/C, (8) Winches, (1) Steel Storage Box, **Stk #1238152.....\$89,750**

\$89,750

**2014
 24-1/2'
 Flatbed
 with
 IMT
 42' Boom**



2014 Western Star 4700 24-1/2' x 96" Steel Flatbed with IMT 16000 Series III Crane, 42' Boom, Detroit DD13 450 HP, Allison 4500RDS Automatic Transmission, Approx. 313,679 Miles, 20,000# Front, 46,000# Rear, 13,200# Rear Lift Axle, P/S, A/C, Double Frame, Locking Rears, (10) Winches, Remote Control, Front Hydraulic Outriggers, **Stk #1241252.....\$89,750**

\$69,750

**2022
 16'
 Flatbed**



2022 Chevrolet Silverado 5500 MD, 4 Wheel Drive, Approx. 73 Miles, Equipped with a 16' NEW Godwin Body, Power Windows, Power Door Locks, Keyless Remote Entry, STD Headboard, Stake Pockets, Undermount Tool Boxes, Anti-Sail Brakes, **Stk #1241162\$69,750**

\$64,750

**2016
 22'
 Steel
 Flatbed**



2016 Freightliner M2106 22' x 96" Steel Flatbed, Cummins ISB 200 HP, Allison 2500RDS Automatic Transmission, Approx. 79,358 Miles, Spring Suspension, 12,000# Front, 21,000# Rear, 26,000# GVWR, P/S, A/C, 2,500# Maxon Tuckaway Lift Gate, Wood Floor, **Stk #1079318.....\$64,750**

Crook Motors - C12

EXCEL TRUCK GROUP

www.exceltg.com



Albemarle, NC • (800) 438-2260
 Charlotte, NC • (704) 597-1110
 Chesapeake, VA • (757) 424-3000
 Chester, VA • (804) 768-4600
 Roanoke, VA • (540) 777-7700
 Weyers Cave, VA • (540) 234-0999



MOTOR COMPANY
www.crookmotors.com

\$89,750

2014 Freightliner M2106 28' x 102" Carrier Miller Hydratail, Cummins ISL 350 HP, Allison 3000RDS Automatic Trans., Approx. 271,203 Miles, 20,000# Front, 40,000# Rear, 60,000# GVWR, Air Ride Suspension, 258" WB, Power Steering, A/C, 20,000# Winch, 30,000# Bed Rating, New Paint, Fresh Overhaul, Stk #1120981.....\$89,750



**2014
 28'
 Hydratail
 with
 Fresh
 Overhaul**

\$79,750



**2016
 28'
 Hydratail**

2016 Peterbilt PB348 28' x 102" Century Hydratail, Paccar PX9 350 HP, Allison 3000RDS-P Automatic Transmission, Approx. 263,262 Miles, 20,000# Front, 40,000# Rear, 60,000# GVWR, Air Ride Suspension, 269" WB, Power Steering, A/C, 20,000# Winch, 30,000# Bed Capacity, Under Bed Toolboxes, Stk #1211804.....\$79,750

\$79,750



**2014
 26'
 Hydratail**

2014 Freightliner M2106 26' x 102" Hydratail, Cummins ISL 350 HP, Allison 3000RDS Automatic Transmission, Approx. 239,256 Miles, 20,000# Front, 40,000# Rear, Air Ride Susp., All Aluminum Wheels, 258" WB, Power Steering, A/C, Winch, Strobe, (2) Toolboxes, Stk #1126884.....\$79,750

\$79,750



**2020
 25'
 Hydratail**

2020 Peterbilt 337 25' x 102" Xtreme Hydratail, Paccar PX7 250 HP, Allison 2500RDS-P Automatic Transmission, Approx. 117,185 Miles, 12,000# Front, 21,000# Rear, 33,000# GVWR, Air Ride Suspension, 258" WB, Power Steering, A/C, 18,000# Bed Capacity, Stk #1233429.....\$79,750

\$69,750



**2014
 28'
 Hydratail**

2014 Peterbilt PB348 28' Steel & Wood Hydratail, Paccar PX9 350 HP, Allison 3000RDS Automatic Transmission, Approx. 336,180 Miles, 20,000# Front, 40,000# Rear, Air Ride Susp., Alum. Wheels, 262" WB, Power Steering, A/C, Remote, (2) Storage Boxes, Beacon, Hydraulic Winch, Stk #17180.....\$79,750

Crook Motors - C13

EXCEL
TRUCK GROUP

www.exceltg.com



Albemarle, NC • (800) 438-2260
Charlotte, NC • (704) 597-1110
Chesapeake, VA • (757) 424-3000
Chester, VA • (804) 768-4600
Roanoke, VA • (540) 777-7700
Weyers Cave, VA • (540) 234-0999



MOTOR COMPANY
www.crookmotors.com

\$159,750

**2018
28'
Versa Tran
Traveling
Tail**



2018 Freightliner 108SD 28' x 102" Versa Tran Traveling Tail, Cummins L9 370 HP, Allison 3000RDS Automatic Transmission, Approx. 143,960 Miles, Air Ride Suspension, 20,000# Front, 40,000# Rear, 11,020# Lift Axle, P/S, A/C, Locking Rears, 40,000# Bed Rating, Dual 15,000# Warn Winches, **Stk #1240009**\$159,750

\$114,750

**2019
28'
Century
Rollback**



2019 Freightliner M2106 28' Century Steel Rollback, Cummins L9 350 HP, Allison 3000RDS Automatic Trans., Approx. 228,544 Miles, 20,000# Front, 40,000# Rear, Air Ride Susp., Aluminum Wheels, P/S, A/C, 30,000# Bed Rating, 20,000# Winch, Under Bed Toolbox, 80 Gallon Aluminum Tank, **Stk #1080687**.....\$114,750

\$112,750

**2018
28'
Century
Rollback**



2018 Freightliner M2106 28' Century Steel Rollback with Wheel Lift, Cummins L9 350 HP, Allison 3000RDS Auto Trans., Approx. 177,236 Miles, 20,000# Front, 40,000# Rear, Air Ride Susp., Aluminum Wheels, Power Steering, A/C, 30,000# Bed Rating, 20,000# Winch, (2) Storage Boxes, Remote Control, **Stk #1047126**.....\$112,750

Crook Motors - C14

EXCEL TRUCK GROUP

www.exceltg.com



Albemarle, NC • (800) 438-2260
 Charlotte, NC • (704) 597-1110
 Chesapeake, VA • (757) 424-3000
 Chester, VA • (804) 768-4600
 Roanoke, VA • (540) 777-7700
 Weyers Cave, VA • (540) 234-0999



MOTOR COMPANY
 www.crookmotors.com

\$104,750



**2017
 28'
 Century
 Rollback**

2017 Peterbilt PB348 28' x 102" Century Rollback, Paccar PX9 350 HP, Allison 3000RDS Automatic Transmission, Approx. 264,311 Miles, 20,000# Front, 40,000# Rear, Air Ride Suspension, 270" WB, Power Steering, A/C, 20,000# Winch, Wood Floor, Stinger Hitch, (2) Toolboxes, Double Framed, Stk #1206633.....\$104,750

\$99,750



**2017
 28'
 Century
 Rollback**

2017 Freightliner M2106 28' Century Steel Rollback, Cummins ISL 350 HP, Allison 3000RDS Auto Trans., Approx. 232,302 Miles, 20,000# Front, 40,000# Rear, Air Ride Susp., Aluminum Wheels, P/S, A/C, 30,000# Bed Rating, 20,000# Winch, Under Bed Toolboxes, 80 Gallon Aluminum Tank, Stk #1080784.....\$99,750

\$99,750



**2016
 28'
 Century
 Rollback**

2016 Kenworth T370 28' x 102" Century/Miller Rollback, Paccar PX9 350 HP, Allison 3000RDS Auto Trans., Approx. 267,281 Miles, 20,000# Front, 40,000# Rear, Air Ride Susp., 268" WB, P/S, A/C, 20,000# Bed Rating, Hydraulic Winch, Beacon Bar, 6,000# Miller Hydraulic Tow Bar, Stk #1205575.....\$99,750

\$99,500



**2016
 28'
 Century
 Rollback**

2016 Peterbilt PB348 28' x 102" Century Rollback, Paccar PX9 350 HP, Allison 3000RDS-P Automatic Transmission, Approx. 231,039 Miles, 20,000# Front, 40,000# Rear, Air Ride Suspension, 260" WB, Power Steering, A/C, 20,000# Winch, 20,000# Bed Capacity, Steel Floor, (2) Under Bed Toolboxes, Stk #1240833.....\$99,500

\$89,750



**2012
 28'
 Jerr-Dan
 Rollback**

2012 Freightliner M2106 28' x 100" Jerr-Dan Rollback, Cummins ISC 300 HP, RT08709B 9-Speed Transmission, Approx. 181,073 Miles, 20,000# Front, 40,000# Rear, Air Ride Suspension, Steel Wheels, Power Steering, A/C, Wood Floor, Winch, Pintle Hook, (2) Toolboxes, Stk #1123420.....\$89,750

\$56,500



**2017
 26'
 Ledwell
 Rollback**

2017 Freightliner M2106 26' x 102" Ledwell Rollback, Cummins ISB 6.7 220 HP, Allison 2500RDS Automatic Transmission, Approx. 176,415 Miles, Spring Suspension, 12,000# Front, 21,000# Rear, Steel Wheels, Power Steering, A/C, 255" WB, Wheel Lift, Wood Floor, Backup Camera, Stk #1225303.....\$56,500

Crook Motors - C15

EXCEL
TRUCK GROUP

www.exceltg.com



Albemarle, NC • (800) 438-2260
Charlotte, NC • (704) 597-1110
Chesapeake, VA • (757) 424-3000
Chester, VA • (804) 768-4600
Roanoke, VA • (540) 777-7700
Weyers Cave, VA • (540) 234-0999



MOTOR COMPANY
www.crookmotors.com

\$69,750

2019 Yard Spotter



2019 Tico Raised Roof Yard Spotter, Cummins ISB 200 HP, **Allison Automatic Transmission, Approx. 8,943 Hours**, Steel Wheels, **Power Steering**, A/C, Road Package, Original White Finish, **Stk #16990**.....\$69,750

\$59,750

2016 Yard Spotter



2016 Ottawa T2 Raised Roof Yard Spotter, Cummins ISB 200 HP, **Automatic Transmission, Approx. 8,457 Hours**, Solid Suspension, 12,000# Front, 24,000# Rear, Steel Wheels, 116" WB, **Power Steering**, Road Package, Original White Finish, **Stk #1000592**.....\$59,750

\$59,750

2016 Yard Spotter



2016 Ottawa 50 Raised Roof Yard Spotter, Cummins ISB 200 HP, **Automatic Transmission, Approx. 14,621 Hours**, Solid Susp., 12,000# Front, 24,000# Rear, Steel Wheels, 158" WB, **Power Steering**, Highway Package, Original White Finish, **Stk #16989**.....\$59,750

\$59,750

2017 Yard Spotter



2017 Ottawa 50 Raised Roof Yard Spotter, Cummins ISB 200 HP, **Automatic Transmission, Approx. 13,080 Hours**, Solid Susp., 12,000# Front, 24,000# Rear, Steel Wheels, 115" WB, **Power Steering**, Highway Package, Original White Finish, **Stk #16988**.....\$59,750

Crook Motors - C16

EXCEL TRUCK GROUP

www.exceltg.com



Albemarle, NC • (800) 438-2260
 Charlotte, NC • (704) 597-1110
 Chesapeake, VA • (757) 424-3000
 Chester, VA • (804) 768-4600
 Roanoke, VA • (540) 777-7700
 Weyers Cave, VA • (540) 234-0999



MOTOR COMPANY
www.crookmotors.com

\$154,750

2018 Galbreath Roll Off



2018 Freightliner 114SD Galbreath Roll Off, Detroit DD13 525 HP, Allison 4500RDS Automatic Trans., Approx. 338,264 Miles, 20,000# Front, 46,000# Rear, 66,000# GVWR, Hendrickson Haulmax Susp., Steel Wheels, P/S, A/C, 60,000# Bed Capacity, Stk #1233315.....\$154,750

\$139,500

2019 4,000 Gallon Water Tank



2019 Freightliner M2106 4,000 Gallon Ledwell Water Tank, Cummins L9 300 HP, Allison 3000RDS Automatic Transmission, Approx. 9,197 Miles, Air Ride Suspension, 18,000# Front, 40,000# Rear, Power Steering, A/C, 196" WB, (5) Sprayers, Rear Hose Reel. Stk #1240407.....\$139,500

\$89,750

2019 2,000 Gallon Water Tank



2019 Freightliner M2106 2,000 Gallon Ledwell Water Tank, Cummins B6.7, Allison 2500RDS Auto Trans., Approx. 12,004 Miles, Spring Susp., 13,000# Front, 20,000# Rear, P/S, A/C, 164" WB, (5) Sprayers, Rear Hose Reel, Stk #1240408.....\$89,750

\$89,750

2019 2,000 Gallon Water Tank



2019 Freightliner M2106 2,000 Gallon Ledwell Water Tank, Cummins ISB 200 HP, Allison 2500RDS Auto Trans., Approx. 20,631 Miles, Spring Susp., 13,000# Front, 20,000# Rear, P/S, A/C, 162" WB, Front, Rear, Road and Curb Sprayers, Rear Hose Reel, Stk #1222522.....\$89,750

\$79,750

2018 2,000 Gallon Water Tank



2018 International 4300 2,000 Gallon Water Tank, Cummins 200 HP, Allison 2500RDS-P Auto Trans., Approx. 13,681 Miles, Spring Susp., 13,000# Front, 20,000# Rear, Power Steering, A/C, 163" WB, Front, Rear, Driver Side Nozzles, Rear Hose Reel, Stk #1209807.....\$79,750

\$79,750

2018 11' Service Body



2018 Freightliner M2106 11' Knapheide Service Body, Cummins ISB 250 HP, Allison 2200RDS Auto Trans., Approx. 120,287 Miles, 8,000# Front, 21,000# Rear, 26,000# GVWR, Air Ride Susp., Steel Wheels, Power Steering, A/C, (3) Storage Bays Each Side, Diff Lock, Rear Hydraulic Outriggers, Stk #1212822.....\$79,750

\$59,750

2013 2,000 Gallon Water Tank



2013 Ford F750 2,000 Gallon Curry Water Tank, Cummins ISB6.7 200 HP, Automatic Transmission, Approx. 21,631 Miles, Spring Suspension, 12,000# Front, 21,000# Rear, P/S, A/C, 159" WB, (5) Sprayers, Rear Hose Reel, Stk #1234113.....\$59,750

\$39,750

2016 M70 Moffett



2016 Moffett M70, Hydrostatic Transmission, Approx. 1,392 Hours, Stk #1211438.....\$39,750

\$39,750

2015 PB55 Princeton



2015 Princeton PB55.3X, 12' Mast, Diesel Engine, Hydrostatic Trans., Approx. 842 Hours, Steel Wheels, 5,500# Capacity, Stk #17153.....\$39,750

Crook Motors - C17



EXCEL
TRUCK GROUP®

ROOK
MOTOR COMPANY
A DIVISION OF EXCEL
TRUCK GROUP.

YOUR #1 TRUCK & TRAILER PARTS PROVIDER

WHAT WE OFFER:

- ✓ Top Industry Brands
- ✓ Delivery Straight to Your Door
- ✓ Over \$18 Million in Inventory



Visit www.ExcelTruckGroup.com/Parts for more!

Crook Motors - C18

EXCEL
TRUCK GROUP

www.exceltg.com



Albemarle, NC • (800) 438-2260
Charlotte, NC • (704) 597-1110
Chesapeake, VA • (757) 424-3000
Chester, VA • (804) 768-4600
Roanoke, VA • (540) 777-7700
Weyers Cave, VA • (540) 234-0999



MOTOR COMPANY
www.crookmotors.com

FLATBED BLOWOUT!

(2) 2025 Dorsey 48' Combo Flatbeds

Ultra Light Combo Flats,
All Aluminum Wheels,
Drop Chains,
Coil Package,
Toolbox



\$42,500

(2) 2024 Mac 53' Flatbed Trailers

Air Ride Spread Axle,
Rear Axle 60' From Rear
of Trailer, 11R22.5 Tires,
Aluminum Outside Wheels,
J Hooks, Coil Package,
Toolbox, Reduced Price
with FET



\$57,900

2023 Dorsey 48' Flatbed Trailer

Air Ride, Aluminum
Toolbox, (12) Winches,
FET Included



\$52,500

(3) 2023 Mac 48' Flatbed Trailers

Air Ride Spread Axle,
Road Warrior Flats, HD
60K Beams,
Hendrickson AAT 25
Suspension, Coil
Package, J Hooks, Outer
Aluminum Wheels,
11R22.5 Tires, Reduced
Price with FET



\$52,500

(6) 2024 Wabash 48' Flatbed Trailers

Air Ride Spread Axle,
Front Axle Lift,
Galvanized Suspension
Hangers, 11R22.5
Tires, Outside
Aluminum Wheels, Coil
Package, Toolbox,
Reduced Price with
FET



\$54,500

2023 Dorsey 48' Combo Flatbed

Ultra Light,
All Aluminum Wheels,
Drop Chains,
Coil Package,
Toolbox,
Reduced Price with
FET



\$41,500

Crook Motors - C19

EXCEL TRUCK GROUP

www.exceltg.com



Albemarle, NC • (800) 438-2260
 Charlotte, NC • (704) 597-1110
 Chesapeake, VA • (757) 424-3000
 Chester, VA • (804) 768-4600
 Roanoke, VA • (540) 777-7700
 Weyers Cave, VA • (540) 234-0999

ROOK

MOTOR COMPANY

www.crookmotors.com

\$85,900

(3) NEW 2025 40' Dump Trailers



NEW 2025 Mac 40' Half Round Aluminum Dump Trailers, Air Ride Susp., Aero Kwik-Lock Roll Tarps, 64" Sides, 3/8" Liner, Stock #1230506, 1230507, 1230496\$85,900 Ea. FET Inc.

\$83,900

NEW 2024 Dump Trailer



NEW 2024 Mac Dump Trailer, Stock Air Ride Suspension, Tarp, Stk #1180186\$83,900 FET Inc.

\$57,900

2009 Tanker Trailer



2009 Heil Tanker Trailer, Air Ride Suspension, 4 Compartment, Up to Date Tank Inspections, Nice One Owner Trailer, Stk #1241989.....\$57,900

\$55,900

(5) NEW 2024 48' Flatbed Trailers



(5) NEW 2024 Wabash 48' Flatbed Trailers, Spread Axle with Front Axle Lift, Aluminum Outside Wheels, J Channel, Toolbox, Coil Package, REDUCEDPRICE.....\$55,900FET Inc.

\$54,750

2014 48' Hydratail Trailer



2014 Landoll 48' x 102" Hydratail Trailer, Air Ride Suspension, 20,000# Winch, Remote Control, 86,300# GVWR Stk #1241985.....\$54,750

\$52,500

2017 40' Half Round Steel Scrap Dump Trailer



2017 Mac 40' Half Round Steel Scrap Dump Trailer, Center Point Susp., Electric Mesh Tarps.....\$52,500

\$52,500

2017 40' Half Round Steel Scrap Dump Trailer



2017 Mac 40' Half Round Steel Scrap Dump Trailer, Center Point Susp., Electric Mesh Tarps, Stk #1097329.....\$52,500

\$49,900

2016 40' Half Round Steel Scrap Dump Trailer



2016 MAC 40' Dump Trailer, Center Point Suspension, Aero Electric Tarp, Manhole Door in Front, Manual Barn Gate, 16" Pin, Stk #1130973.....\$49,900

\$47,500

2015 40' Half Round Steel Scrap Dump Trailer



2015 Mac 40' Half Round Steel Scrap Dump Trailer, Center Point Suspension, Electric Mesh Tarps, Nice Condition, Stk #1123565.....\$47,500

Crook Motors - C20

EXCEL TRUCK GROUP

www.exceltg.com



Albemarle, NC • (800) 438-2260
 Charlotte, NC • (704) 597-1110
 Chesapeake, VA • (757) 424-3000
 Chester, VA • (804) 768-4600
 Roanoke, VA • (540) 777-7700
 Weyers Cave, VA • (540) 234-0999



MOTOR COMPANY
www.crookmotors.com

\$44,750

2016 48' x 102" Traveling Tail Trailer



2016 Trail-Eze TE80XT 48' x 102" Traveling Tail Trailer, Air Ride Susp, Hydraulic Winch, Stk #1228295.....\$44,750

\$42,500

2015 48' x 102" Hydratail Trailer



2015 Trail King TK80HST-482 48' x 102" Hydratail Trailer, Air Ride Suspension, 20,000# Hydraulic Winch, Stk#1217005.....\$42,500

\$41,900

(7) 2024 53' x 102" Van Trailers



(7) NEW 2024 Wabash 53' x 102" Aluminum Van Trailers with Disc Brakes, Air Ride Susp., Wood Floor, Solid Roof, Aero Skirts, Hendrickson Tire Maax Pro Auto Inflate Tire System.....\$41,900 Ea. FET Inc.

\$39,900

NEW 2024 53' x 102" Aluminum Van Trailers



(2) Specs to Choose From! NEW 2024 Wabash 53' x 102" Aluminum Van Trailers, Air Ride Suspension, Wood Floor, Duraplate Aeroskirt Air Deflector, Aluminum Lined, Log Posts.....\$39,900 Ea. FET Inc.

\$39,900

2020 Reefer Trailer



2020 Wabash Reefer Van Trailer, Stk #1209515.....\$39,900

\$38,900

2022 48' Flatbed Trailer



2022 Dorsey 48' Flatbed Trailer, Stk #1235552.....\$38,900

\$32,500

2017 Reefer Trailer



2017 Wabash 53' Reefer Trailer, Stk #1183413.....\$34,500

\$32,500

2017 53' Reefer Trailer



2017 Utility 53' Reefer Trailer, Stk #1189779.....\$32,500

\$32,500

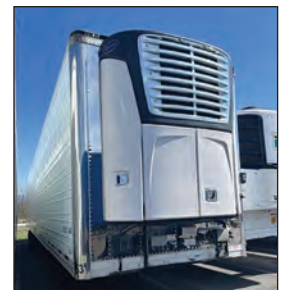
2017 Reefer Trailer



2017 Utility Reefer Trailer, Stk #1192553.....\$32,500

\$31,900

2017 Reefer Trailer



2017 Vanguard Reefer Trailer, Stk #1196075.....\$31,900

Crook Motors - C21

EXCEL TRUCK GROUP

www.exceltg.com



Albemarle, NC • (800) 438-2260
 Charlotte, NC • (704) 597-1110
 Chesapeake, VA • (757) 424-3000
 Chester, VA • (804) 768-4600
 Roanoke, VA • (540) 777-7700
 Weyers Cave, VA • (540) 234-0999



MOTOR COMPANY
 www.crookmotors.com

\$29,750

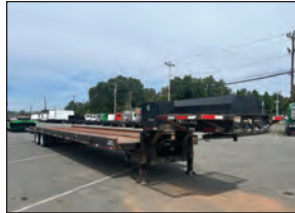
2010 53' x 102" Aluminum Van Trailer



2010 Kentucky 53' x 102" Aluminum Van Trailer, Air Ride Suspension, Trans Roof, Vertical Log Post, Sliding Loading Platform, Under Trailer Storage (4) Curbside Doors, (2) Road Side Doors, Swing Rear Door, Stk #T8385.....\$29,750

\$29,750

2014 48' x 99" Container Trailer



2014 Lucon 48' x 99" Container Trailer, Pony Motor, 2-Speed Landing Gear, (1) Steel Storage Box, (6) Winches, Stk #1231144.....\$29,750

\$29,500

2022 53' Aluminum Van Trailer



2022 Wabash 53' Aluminum Van Trailer, Stk #1131162.....\$29,500

\$29,500

2022 53' Aluminum Van Trailer



2022 Wabash 53' Aluminum Van Trailer, Stk #1035281.....\$29,500

\$29,500

2022 53' Aluminum Van Trailer



2022 Wabash 53' Aluminum Van Trailer, Stk #1131159.....\$29,500

\$29,500

2022 53' Aluminum Van Trailer



2022 Wabash 53' Aluminum Van Trailer, Stk #1131167.....\$29,500

\$29,500

2022 53' Aluminum Van Trailer



2022 Wabash 53' Aluminum Van Trailer, Stk #1131171.....\$29,500

\$28,900

2016 53' Reefer Trailer



2016 Utility 53' Reefer Trailer, Stk #1184876.....\$28,900

\$27,900

2020 48' Flatbed Trailer



2020 Transcraft 48' Flatbed Trailer, Stk #1000559.....\$27,900

\$27,500

2015 48' Flatbed Trailer with Universal Forklift Hookup Kit



2015 Clark CFBT-2015 48' X 102" Flatbed Trailer w/Universal Forklift Hookup Kit, Air Ride Susp., Aluminum Floor, (14) Winches, (8) Straps, Steel Headboard, Stk #T8389.....\$27,500

\$22,500

2016 Log Trailer



2016 McLendon Log Trailer, Stk #1238898.....\$22,500

\$18,500

2015 Flatbed Trailer



2015 Great Dane 48' Flatbed Trailer, Stk #1207410.....\$18,500

Crook Motors - C22

EXCEL TRUCK GROUP

www.exceltg.com



Albemarle, NC • (800) 438-2260
 Charlotte, NC • (704) 597-1110
 Chesapeake, VA • (757) 424-3000
 Chester, VA • (804) 768-4600
 Roanoke, VA • (540) 777-7700
 Weyers Cave, VA • (540) 234-0999



MOTOR COMPANY
www.crookmotors.com

\$18,500

2013 48' Flatbed Trailer



2013 Benson 48' Flatbed Trailer, Stk #1171836.....\$18,500

\$18,500

2014 48' Flatbed Trailer



2014 Great Dane 48' Flatbed Trailer, Stk #1207331.....\$18,500

\$16,900

2015 53' Van Trailer



2015 Wabash 53' x 102" Duraplate Van Trailer, Air Ride Susp., Aluminum Roof, Vertical Logistics, Swing Door, Stk #1230938.....\$16,900

\$15,500

2005 45' Open Top Trailer



2005 Peerless 45' x 96" Open Top Trailer, Spring Suspension, 65,000# GVWR, Roll Tarp, 2-Speed Landing Gear, Stk #1240680.....\$15,500

\$15,500

2013 53' Aluminum Van Trailer



2013 Stoughton 53' Aluminum Van Trailer Stk #1168286.....\$15,500

\$14,750

2002 40' Flatbed Trailer



2002 Manac 40' x 102" Flatbed Trailer w/ Princeton Hookup, Air Ride Susp., Stk #T8334.....\$14,750

\$14,500

2005 48' Aero Slide Tarp Trailer



2005 Great Dane 48' Flatbed Trailer w/ Aero Slide Tarp Trailer, (12) Winches, (10) Straps, Stk #1217024.....\$14,500

\$14,500

2013 53' Aluminum Van Trailer



2013 Great Dane 53' Aluminum Van Trailer Stk #1179149.....\$14,500

\$12,500

2013 53' Aluminum Van Trailer



2013 Utility 53' Aluminum Van Trailer Stk #1155664.....\$12,500

\$10,500

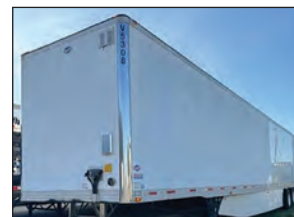
2009 53' Aluminum Van Trailer



2009 Wabash 53' x 102" Aluminum Van Trailer, Air Ride, Wood Floor, Log Post, Swing Door, Stk #T8305.....\$10,500

\$10,500

2010 53' Van Trailer



2010 Utility 53' Aluminum Van Trailer, Stk #1144884.....\$10,500

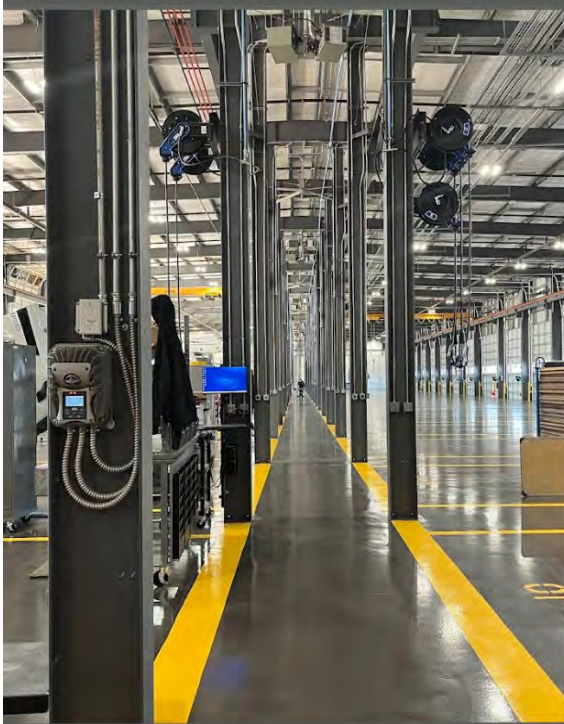
\$7,500

2008 53' Aluminum Van Trailer



2008 Trailmobile 53' Aluminum Van Trailer, Stk #1188812.....\$7,500

Crook Motors - C23



Spacious Customer Lounge



EXCEL TRUCK GROUP® ROCK HILL, SC

**FACTORY-TRAINED
EXPERTS**

**MOBILE ON-SITE
SERVICE**

**FREIGHTLINER
WARRANTY CERTIFIED**

Contact Our Service Team Now!

(803) 576-3900

etgrockhillservice@exceltg.com

1170 Porter Road
Rock Hill, SC 29730

**ALL MAKES AND MODEL
SERVICE AND REPAIRS**



Customer Laundry, Coffee, Reclining Chairs, Work Stations with Chargers, Vending Machines & more!

Crook Motors - C24

EXCEL TRUCK GROUP

www.exceltg.com



Albemarle, NC • (800) 438-2260
 Charlotte, NC • (704) 597-1110
 Chesapeake, VA • (757) 424-3000
 Chester, VA • (804) 768-4600
 Roanoke, VA • (540) 777-7700
 Weyers Cave, VA • (540) 234-0999



MOTOR COMPANY
 www.crookmotors.com

\$139,750



**2022
 Tandem
 Axle
 Day
 Cab**

2022 Western Star 49X Tandem Axle Day Cab, Detroit DD16 560 HP, FRO-18210C 10-Speed OD Transmission, Approx. 235,530 Miles, Air Ride Suspension, 12,000# Front, 46,000# Rear, All Aluminum Wheels, Power Steering, A/C, 220" WB, Aluminum Headache Rack, SS Visor, Full Locking Rears, Stk #1230787.....\$139,750

\$139,750



**2017
 Tri-Axle
 Day
 Cab**

2017 Kenworth T880 Tri-Axle Day Cab, Cummins X15 525 HP, RTLO-18918B 18-Speed Trans., Approx. 367,443 Miles, Air Ride Susp., 18,740# Front, 46,000# Rear, 20,000# Lift Axle, Aluminum Wheels, Power S/S, A/C, Aluminum Tanks, Stk #1234108.....\$139,750

\$109,750



**2018
 Tandem
 Axle
 Day
 Cab**

2018 International HX520 Tandem Axle Day Cab, Cummins X15 565 HP, RT-LOF-18918B 18-Speed Trans., Approx. 241,678 Miles, Air Ride Susp., 14,320# Front, 46,000# Rear, 60,320# GVWR, Aluminum Wheels, P/S, A/C, 235" WB, Aluminum Headache Rack, Beacon Light, Dual SS Breathers, SS Visor, Stk #1238989.....\$109,750

\$99,750



**2018
 Tandem
 Axle
 Day
 Cab**

2018 Peterbilt 567 Tandem Axle Day Cab, Paccar MX13 510 HP, Allison 4500RDS Automatic Transmission, Approx. 231,986 Miles, Air Ride Suspension, 12,000# Front, 40,000# Rear, Aluminum Wheels, P/S, A/C, 200" WB, 2-Way Wet Line, SS Visor, SS Half Fenders, Stk #1239733.....\$99,750

\$96,750



**2020
 Tandem
 Axle
 Day
 Cab**

2020 Freightliner PE116064ST Tandem Axle Day Cab, Detroit DD13 470 HP, DT12 Automatic Transmission, Approx. 207,832 Miles, Air Ride Susp., 12,350# Front, 40,000# Rear, 52,350# GVWR, Aluminum Wheels, P/S, A/C, 208" WB, 2-Way Wet Line, Aluminum Headache Rack w/Beacon Light, (1) Step Storage Box, SS Half Fenders, Painted Visor, Stk #1061544.....\$96,750

\$96,750



**2019
 Tandem
 Axle
 Day
 Cab**

2019 Peterbilt 579 Tandem Axle Day Cab, Cummins X15 450 HP, Ultrashift Automatic Transmission, Approx. 171,608 Miles, Air Ride Suspension, 12,000# Front, 38,000# Rear, Aluminum Wheels, Power Steering, A/C, 194" WB, Dual Line Wet Kit, Headache Rack, Chrome Visor, Stk #1236154.....\$96,750

Crook Motors - C25

EXCEL TRUCK GROUP

www.exceltg.com



Albemarle, NC • (800) 438-2260
 Charlotte, NC • (704) 597-1110
 Chesapeake, VA • (757) 424-3000
 Chester, VA • (804) 768-4600
 Roanoke, VA • (540) 777-7700
 Weyers Cave, VA • (540) 234-0999



MOTOR COMPANY
 www.crookmotors.com

\$94,750

2017
 Tandem
 Axle
 Day
 Cab



2017 Mack CHU613 Tandem Axle Day Cab, Mack MP8 505 HP, M-Drive Automatic Transmission, Approx. 317,459 Miles, Air Ride Suspension, 14,320# Front, 46,000# Rear, 60,320# GVWR, Aluminum Wheels, Power Steering, A/C, 211" WB, Dual Line Wet Kit with Cab Controls for Dump, Interaxle/Diff Lock, Stk #1239781.....\$94,750

\$94,750

2020
 Tandem
 Axle
 Day
 Cab



2020 Peterbilt 579 Tandem Axle Day Cab, Paccar MX13 455 HP, Eaton Automatic Transmission, Approx. 139,828 Miles, Air Ride Suspension, 12,000# Front, 38,000# Rear, Aluminum Wheels, Power Steering, A/C, 192" WB, Dual Line Wet Kit, Headache Rack, Aluminum Half Fenders, Stk #1240136.....\$94,750

\$89,750

2018
 Tandem
 Axle
 Day
 Cab



2018 Freightliner PX125064ST Tandem Axle Day Cab, Cummins X15 450 HP, FO-16E313A-MHP Ultrashift Transmission, Approx. 196,754 Miles, Air Ride Suspension, 12,000# Front, 40,000# Rear, All Aluminum Wheels, Power Steering, A/C, 194" WB, Aluminum Headache Rack, 2-Way Wet Line, Aluminum Half Fenders, (1) Aluminum Step/Storage Box, Stk #1232848.....\$89,750

\$89,750

2019
 Tandem
 Axle
 Day
 Cab



2019 Peterbilt 579 Tandem Axle Day Cab, Cummins X15 450 HP, Automatic Transmission, Approx. 205,497 Miles, Air Ride Suspension, 12,000# Front, 38,000# Rear, Aluminum Wheels, Power Steering, A/C, 193" WB, 2-Way Wet Kit, Headache Rack, Beacon Light, (1) Step Storage Box, SS Half Fenders, SS Visor, Stk #1239994.....\$89,750

\$89,750

2020
 Tandem
 Axle
 Day
 Cab
 Glider Kit



2020 Freightliner CL12064ST Glider Kit Tandem Axle Day Cab, Detroit 12.7 500 HP, RTX-16710B 10-Speed Transmission, Approx. 71,982 Miles, Air Ride Suspension, 12,000# Front, 40,000# Rear, All Aluminum Wheels, Power Steering, A/C, 180" WB, SS Half Fenders, PTO (Only), Stk #1242169.....\$89,750

\$89,500

2019
 Tandem
 Axle
 Day
 Cab



2019 Freightliner PE116064ST Tandem Axle Day Cab, Detroit DD13 470 HP, DT12 Automatic Transmission, Approx. 189,116 Miles, Air Ride Suspension, 12,500# Front, 40,000# Rear, Aluminum Wheels, Power Steering, A/C, 210" WB, Dual Line Wet Kit, Headache Rack, Dual Aluminum Tanks, Stk #1010552.....\$89,500

Crook Motors - C26

EXCEL TRUCK GROUP

www.exceltg.com



Albemarle, NC • (800) 438-2260
 Charlotte, NC • (704) 597-1110
 Chesapeake, VA • (757) 424-3000
 Chester, VA • (804) 768-4600
 Roanoke, VA • (540) 777-7700
 Weyers Cave, VA • (540) 234-0999



MOTOR COMPANY
 www.crookmotors.com

\$82,750



**2018
 Tandem
 Axle
 Day
 Cab
 Glider Kit**

2018 Freightliner CL12064ST Glider Kit Tandem Axle Day Cab, Detroit 12.7 500 HP, RTX-16710B 10-Speed Transmission, Approx. 259,624 Miles, Air Ride Suspension, 12,000# Front, 40,000# Rear, All Aluminum Wheels, Power Steering, A/C, 180" WB, SS Half Fenders, PTO (Only), Stk #1242170.....**\$82,750**

\$79,750



**2019
 Tandem
 Axle
 Day
 Cab**

2019 Freightliner PX125064ST Tandem Axle Day Cab, Detroit DD13 450 HP, DT12 Automatic Transmission, Approx. 105,594 Miles, Air Ride Suspension, 12,000# Front, 40,000# Rear, Steel Wheels, Power Steering, A/C, 178" WB, Air Ride Cab, Stk #1215516.....**\$79,750**

\$79,750



**2019
 Tandem
 Axle
 Day
 Cab**

2019 Mack CHU613 Tandem Axle Day Cab, Mack MP8 415 HP, M-Drive Automatic Transmission, Approx. 179,258 Miles, Air Ride Suspension, 12,000# Front, 40,000# Rear, 52,000# GVWR, Aluminum Wheels, Power Steering, A/C, 198" WB, 2-Way Wet Line, Aluminum Headache Rack with Beacon Light, Aluminum Half Fenders, SS Visor, Stk #1240172.....**\$79,750**

\$69,750



**2017
 Tandem
 Axle
 Day
 Cab**

2017 Freightliner Cascadia 125 Tandem Axle Day Cab, Cummins X15, FO16E313A-MHP Automatic Transmission, Approx. 217,000 Miles, Air Ride Suspension, 12,000# Front, 40,000# Rear, Aluminum Wheels, Power Steering, A/C, 194" WB, Wet Kit, Aluminum Headache Rack, Stk #1080746.....**\$69,750**

\$69,750



**2017
 Tandem
 Axle
 Day
 Cab**

2017 Freightliner PX125064ST Tandem Axle Day Cab, Detroit DD13 450 HP, FAO-161810C 10-Speed OD Transmission, Approx. 105,235 Miles, Air Ride Suspension, 14,600# Front, 40,000# Rear, Steel Wheels, Power Steering, A/C, 210" WB, 2-Way Wet Line, Aluminum Headache Rack w/Beacon Light, (1) Aluminum Step/Storage Box, SS Half Fenders, Stk #1215521.....**\$69,750**

\$64,750



**2017
 Tandem
 Axle
 Day
 Cab**

2017 Freightliner PX124064S Tandem Axle Day Cab, Detroit DD13, FRO-16210C 10-Speed Transmission, Approx. 193,081 Miles, Air Ride Suspension, 12,000# Front, 40,000# Rear, Aluminum Wheels, Power Steering, A/C, 204" WB, Dual Line Wet Kit, Headache Rack, Stk #17185.....**\$64,750**

Crook Motors - C27

EXCEL TRUCK GROUP

www.exceltg.com



Albemarle, NC • (800) 438-2260
 Charlotte, NC • (704) 597-1110
 Chesapeake, VA • (757) 424-3000
 Chester, VA • (804) 768-4600
 Roanoke, VA • (540) 777-7700
 Weyers Cave, VA • (540) 234-0999



MOTOR COMPANY
 www.crookmotors.com

\$59,750

**2019
 Single
 Axle
 Day
 Cab**



2019 Western Star 4900SA Single Axle Day Cab, Cummins X15 485 HP, FRO-16210C 10-Speed OD Transmission, **Approx. 157,910 Miles, Air Ride Suspension, 12,350# Front, 23,000# Rear**, Aluminum Wheels, Power Steering, A/C, 169" WB, Small Top Shield, Painted Visor, **Stk #1230167**.....\$59,750

\$59,750

**2018
 Tandem
 Axle
 Day
 Cab**



2018 Freightliner CA113DC Tandem Axle Day Cab, Detroit DD13 470 HP, **DT12 Automatic Transmission**, **Approx. 314,971 Miles, Air Ride Suspension, 12,000# Front, 40,000# Rear**, Aluminum Wheels, Power Steering, A/C, 190" WB, **Stk #1235200**.....\$59,750

\$59,750

2021 Tandem Axle Day Cab



2021 Freightliner PE116064ST Tandem Axle Day Cab, Detroit DD13 450 HP, **DT12 Auto Trans.**, **Approx. 245,798 Miles, Air Ride Susp., 12,500# Front, 40,000# Rear**, Aluminum Wheels, Power Steering, A/C, 158" WB, Air Ride Cab, **Stk #1241437**.....\$59,750

\$59,750

2021 Tandem Axle Day Cab



2021 Freightliner PE116064ST Tandem Axle Day Cab, Detroit DD13 450 HP, **DT12 Auto Trans.**, **Approx. 225,230 Miles, Air Ride Susp., 12,500# Front, 40,000# Rear**, Aluminum Wheels, Power Steering, A/C, 158" WB, Air Ride Cab, **Stk #1241438**.....\$59,750

\$56,750

2019 Tandem Axle Day Cab



2019 Mack Anthem 64T Tandem Axle Day Cab, Mack MP8 415 HP, **M-Drive Automatic Transmission**, **Approx. 391,385 Miles, Air Ride Suspension, 12,000# Front, 40,000# Rear**, Aluminum Wheels, Power Steering, A/C, Diff Lock, **Stk #1004877**.....\$56,750

\$54,750

2019 Tandem Axle Day Cab



2019 Freightliner CA125DC Tandem Axle Day Cab, Detroit DD13 475 HP, FRO-16210C 10-Speed Trans., **Approx. 203,667 Miles, Air Ride Susp.**, 12,000# Front, 40,000# Rear, Steel Wheels, P/S, A/C, 178" WB, Painted Visor, Fog Lights, Roof Fairing, **Stk #1202531**.....\$54,750

\$54,750

2016 Tandem Axle Day Cab



2016 Western Star 4700SB Tandem Axle Day Cab, Detroit DD13 450 HP, FRO-16210C 10-Speed OD Transmission, **Approx. 145,068 Miles**, 12,000# Front, 40,000# Rear, Air Ride Suspension, 172" WB, P/S, A/C, Diff and Inter Axle Lock, **Stk #1225972**.....\$54,750

\$49,750

2012 Tandem Axle Day Cab



2012 Kenworth T800 Tandem Axle Day Cab, Cummins ISX15 485 HP, FRO-16210C 10-Speed Trans., **Approx. 593,791 Miles, Air Ride Susp.**, 12,350# Front, 40,000# Rear, Aluminum Wheels, P/S, A/C, 198" WB, **Stk #1206449**.....\$49,750

Crook Motors - C28

EXCEL TRUCK GROUP

www.exceltg.com



Albemarle, NC • (800) 438-2260
 Charlotte, NC • (704) 597-1110
 Chesapeake, VA • (757) 424-3000
 Chester, VA • (804) 768-4600
 Roanoke, VA • (540) 777-7700
 Weyers Cave, VA • (540) 234-0999



MOTOR COMPANY
www.crookmotors.com

\$46,500

2018 Tandem Axle Day Cab



2018 Freightliner CA125DC Tandem Axle Day Cab, Detroit DD15 455 HP, **DT12 Auto Trans.**, Approx. **213,718 Miles**, Air Ride Susp., 12,000# Front, 40,000# Rear, Aluminum Wheels, Power Steering, A/C, 178" WB, Heated/Vented Seats, **Stk #1239739.....\$46,500**

\$46,500

2018 Tandem Axle Day Cab



2018 Freightliner PT12064ST Tandem Axle Day Cab, Detroit DD13 450 HP, **DT12 Auto Trans.**, Approx. **204,226 Miles**, Air Ride Susp., 12,000# Front, 40,000# Rear, Steel Wheels, Power Steering, A/C, 180" WB, Small Top Fairing, **Stk #1239743.....\$46,500**

\$49,750

2016 Tandem Axle Day Cab



2016 Freightliner Cascadia 125 Tandem Axle Day Cab, Detroit DD13, FRO-16210C 10-Speed Transmission, Approx. **317,705 Miles**, Air Ride Suspension, 12,000# Front, 40,000# Rear, Power Steering, A/C, 204" WB, Wet Line Kit, **Stk #1209351.....\$54,750**

\$49,750

2016 Tandem Axle Day Cab



2016 Western Star 4700SB Tandem Axle Day Cab, Detroit DD13 450 HP, FRO-16210C 10-Speed OD Transmission, Approx. **130,896 Miles**, 12,000# Front, 40,000# Rear, Air Ride Suspension, 172" WB, Diff and Inter Axle Lock, **Stk #1225973.....\$49,750**

\$49,750

2012 Tandem Axle Day Cab



2012 Kenworth T660 Tandem Axle Day Cab, Cummins ISX15 450 HP, RTLO-18913A 13-Speed Trans, Approx. **336,946 Miles**, Air Ride Suspension, **12,350# Front, 40,000# Rear**, Aluminum Wheels, Power Steering, A/C, 189" WB, Aluminum Tank, **Stk #1238332.....\$49,750**

\$49,750

2018 Tandem Axle Day Cab



2018 Freightliner Cascadia 125 Tandem Axle Day Cab, Detroit DD15 455 HP, **DT12 Automatic Transmission**, Approx. **214,847 Miles**, Air Ride Suspension, 12,000# Front, 40,000# Rear, P/S, A/C, 178" WB, **Stk #1239740.....\$49,750**

\$46,500

2017 Single Axle Day Cab



2017 Freightliner PX125042ST Single Axle Day Cab, Detroit DD13 410 HP, FRO-14210C 10-Speed OD Trans., Approx. **135,705 Miles**, Air Ride Susp., 12,000# Front, 21,000# Rear, Steel Wheels, P/S, A/C, 174" WB, Small Top Fairing, Air Ride Cab, **Stk #1237498.....\$46,500**

\$45,750

2015 Tandem Axle Day Cab



2015 Freightliner PX125064ST Tandem Axle Day Cab, Detroit DD13 450 HP, FRO-16210C 10-Speed Trans., Approx. **356,925 Miles**, Air Ride Susp., **14,600# Front, 40,000# Rear**, Steel Wheels, P/S, A/C, 210" WB, 2-Line Wet Kit, Headache Rack, Beacon, **Stk #1212814.....\$45,750**

\$45,750

2016 Single Axle Day Cab



2016 Freightliner PX125042ST Single Axle Day Cab, Detroit DD13 410 HP, **DT12 Automatic Trans.**, Approx. **125,326 Miles**, Air Ride Susp., 12,000# Front, 23,000# Rear, Power Steering, A/C, 166" WB, Top Fairing, **Stk #1238902.....\$45,750**

Crook Motors - C29

EXCEL TRUCK GROUP

www.exceltg.com



Albemarle, NC • (800) 438-2260
 Charlotte, NC • (704) 597-1110
 Chesapeake, VA • (757) 424-3000
 Chester, VA • (804) 768-4600
 Roanoke, VA • (540) 777-7700
 Weyers Cave, VA • (540) 234-0999



MOTOR COMPANY
 www.crookmotors.com

\$45,750

2016 Single Axle Day Cab



2016 Freightliner PX125042ST Single Axle Day Cab, Detroit DD13 410 HP, DT12 Automatic Trans., Approx. 118,252 Miles, Air Ride Susp., 12,000# Front, 20,000# Rear, Aluminum Wheels, Power Steering, A/C, 166" WB, Small Top Fairing, Stk #1238903.....\$45,750

\$44,750

2015 Tandem Axle Day Cab



2015 Freightliner PX125064ST Tandem Axle Day Cab, Detroit DD13 450 HP, FRO-16210C 10-Speed Trans., Approx. 372,383 Miles, Air Ride Susp., 12,000# Front, 40,000# Rear, Alum. Wheels, P/S, A/C, 204" WB, 2-Line Wet Kit, Headache Rack, Strobe, Stk #1202910.....\$44,750

\$39,750

2015 Tandem Axle Day Cab



2015 Mack CXU613 Tandem Axle Day Cab, Mack MP8 415 HP, mDrive Trans., Approx. 368,570 Miles, Air Ride Susp., 12,000# Front, 40,000# Rear, Alum. Wheels, P/S, A/C, 197" WB, Stk #1089504.....\$44,750

\$39,750

2015 Tandem Axle Day Cab



2015 Freightliner PX125064ST Tandem Axle Day Cab, Detroit DD13 450 HP, FRO-16210B 10-Speed Trans., Approx. 481,216 Miles, Air Ride Susp., 14,700# Front, 40,000# Rear, Power Steering, A/C, 186" WB, Dual Line Wet Kit, Headache Rack, Stk #1209624.....\$39,750

\$37,750

2015 Tandem Axle Day Cab



2015 Volvo VNL Tandem Axle Day Cab, Volvo D13 455 HP, AT2612D Automatic Trans., Approx. 351,125 Miles, Air Ride Susp., 13,200# Front, 38,000# Rear, P/S, A/C, 192" WB, Half Plastic Fenders, Stk #1239943.....\$37,750

\$29,750

2013 Tandem Axle Day Cab



2013 Freightliner Cascadia 125 Tandem Axle Day Cab, Detroit DD15, FRO-17210C Transmission, Approx. 682,165 Miles, Air Ride Suspension, 12,000# Front, 40,000# Rear, P/S, A/C, 190" WB, New One Box, Stk #1002273.....\$29,750

\$29,750

2017 Tandem Axle Day Cab



2017 Freightliner Cascadia 125 Tandem Axle Day Cab, Detroit DD13 505 HP, DT12 Auto Trans., Air Ride Susp., 12,000# Front, 40,000# Rear, Power Steering, A/C, 175" WB, Stk #1122858.....\$29,750

\$28,750

2013 Tandem Axle Day Cab



2013 Freightliner Cascadia 125 Tandem Axle Day Cab, Detroit DD15, FRO-16210C 10-Speed Trans., Approx. 669,057 Miles, Air Ride Susp., 12,000# Front, 40,000# Rear, P/S, A/C, 190" WB, Stk #1001716.....\$28,750

\$26,500

2018 Single Axle Day Cab



2015 Mack CXU612 Single Axle Day Cab, Mack MP7 395 HP, 10-Speed Trans., Approx. 660,383 Miles, Air Ride Susp., 12,000# Front, 23,000# Rear, Alum/Steel Wheels, P/S, A/C, 170" WB, Stk #1076132.....\$26,500

Crook Motors - C30

EXCEL
TRUCK GROUP
www.exceltg.com



Albemarle, NC • (800) 438-2260
 Charlotte, NC • (704) 597-1110
 Chesapeake, VA • (757) 424-3000
 Chester, VA • (804) 768-4600
 Roanoke, VA • (540) 777-7700
 Weyers Cave, VA • (540) 234-0999

ROOK
MOTOR COMPANY
www.crookmotors.com

\$149,750

2022 Western Star 60" Mid Roof Sleeper, Detroit DD16 560 HP, **DT12 Automatic Transmission**, Approx. **131,916 Miles**, **13,300# Front**, **46,000# Rear**, **Air Ride Suspension**, 254" WB, Aluminum Wheels, **Power Steering**, A/C, SS Visor, Diff and Inter Axle Lock, Dual 120 Gallon Aluminum Tanks, **Stk #1228644**.....
\$149,750



2022
60"
Mid Roof
Sleeper

\$149,500



2015
38"
Mid Roof
Sleeper

2015 Kenworth T800 Tri-Axle 38" Mid Roof Sleeper, Cummins ISX15 600 HP, RT-LO-18918B 18-Speed Transmission, Approx. 284,669 Miles, **Air Ride Susp.**, **20,000# Front**, **46,000# Rear**, **Lift Axle**, Aluminum Wheels, **Dual Power Steering**, A/C, 247" WB, **Headache Rack w/ (3) Storage Compartments**, Full Locking Rears, SS Half Fenders, Double Frame, Dual SS Breathers, **Stk #1234135**.....
\$149,500

\$89,750



2018
72"
Raised Roof
Sleeper

2018 Freightliner Cascadia 126 72" Raised Roof Sleeper, (2) Bunks, Detroit DD15 400 HP, **DT12 Automatic Transmission**, Approx. 9,337 Miles, **Air Ride Suspension**, **12,350# Front**, **40,000# Rear**, P/S, A/C, 231" WB, **Stk #1241630**.....
\$89,750

\$79,750



2014
62"
Mid Roof
Sleeper

2014 Kenworth T800 Tri-Axle 62" Mid Roof Sleeper, Cummins ISX15 500 HP, RT-LO-16918B 18-Speed Transmission, Approx. 479,295 Miles, **Air Ride Susp.**, **13,200# Front**, **40,000# Rear**, **22,500# Solid Lift Axle**, Aluminum Wheels, P/S, A/C, 228" WB, **Headache Rack**, **Dual Line Wet Kit**, Chrome Stacks, Aluminum Visor, Dual Aluminum Tanks, **Stk #1226935**.....
\$79,750

\$68,500



2022
75"
Raised Roof
Sleeper

2022 Western Star 75" Raised Roof Sleeper, Detroit DD15 475 HP, **DT12 Automatic Transmission**, Approx. 449,872 Miles, **13,300# Front**, **46,000# Rear**, **Air Ride Suspension**, 257" WB, Aluminum Wheels, **Power Steering**, A/C, (2) Bunks, **Thermo King Tri Pac APU**, Chrome Visor, **Balance of EW4 Factory Warranty**, **Stk #1235278**.....
\$68,500

Crook Motors - C31

EXCEL TRUCK GROUP

www.exceltg.com



Albemarle, NC • (800) 438-2260
 Charlotte, NC • (704) 597-1110
 Chesapeake, VA • (757) 424-3000
 Chester, VA • (804) 768-4600
 Roanoke, VA • (540) 777-7700
 Weyers Cave, VA • (540) 234-0999



MOTOR COMPANY
www.crookmotors.com

\$59,750

**2020
 High
 Rise
 Sleeper**



2020 Freightliner Cascadia 126 High Rise Sleeper, (2) Bunks, Detroit DD15, **DT12 Automatic Transmission**, Approx. 429,565 Miles, Air Ride Suspension, **13,300# Front, 40,000# Rear**, P/S, A/C, 234" WB, APU, Stk #1125274.....\$59,750

\$59,750

**2017
 48"
 Mid Roof
 Sleeper**



2017 Freightliner Cascadia 125 48" Mid Roof Sleeper, Detroit DD15 505 HP, 13-Speed Transmission, Approx. 75,285 Miles, Air Ride Suspension, **13,300# Front, 40,000# Rear**, P/S, A/C, 270" WB, Headache Rack, Stk #1240406.....\$59,750

\$59,500

**2020
 72"
 Condo
 Sleeper**



2020 Freightliner Cascadia 125 72" Condo Sleeper, (2) Bunks, Detroit DD15 455 HP, **DT12 Automatic Transmission**, Approx. 490,992 Miles, **13,300# Front, 40,000# Rear**, Air Ride Suspension, 228" WB, Power Steering, A/C, Park Smart APU, Power Inverter, Stk #1239479.....\$59,500

\$59,500

**2020
 72"
 Raised
 Roof
 Sleeper**



2020 Freightliner Cascadia 126 72" Raised Roof Sleeper, (2) Bunks, Detroit DD15 400 HP, **DT12 Automatic Transmission**, Approx. 435,570 Miles, Air Ride Suspension, **13,300# Front, 40,000# Rear**, Power Steering, A/C, 231" WB, Tri Pac Evolution APU, Refrigerator, Tank Fairings, Stk #1069222.....\$59,500

\$59,500

**2021
 80"
 Raised
 Roof
 Sleeper**



2021 Peterbilt 579 80" Raised Roof Sleeper, (2) Bunks, Cummins X15 400 HP, **Automatic Transmission**, Approx. 500,532 Miles, **13,200# Front, 40,000# Rear**, Air Ride Suspension, 238" WB, P/S, A/C, Refrigerator, Tank Fairings, Stk #1149425.....\$59,500

\$59,500

**2020
 72"
 Condo
 Sleeper**



2020 Freightliner Cascadia 125 72" Condo Sleeper, (2) Bunks, Detroit DD15 455 HP, **DT12 Automatic Transmission**, Approx. 498,022 Miles, **13,300# Front, 40,000# Rear**, Air Ride Suspension, 228" WB, Power Steering, A/C, Park Smart APU, Power Inverter, Stk #1239485.....\$59,500

Crook Motors - C32

EXCEL TRUCK GROUP

www.exceltg.com



Albemarle, NC • (800) 438-2260
 Charlotte, NC • (704) 597-1110
 Chesapeake, VA • (757) 424-3000
 Chester, VA • (804) 768-4600
 Roanoke, VA • (540) 777-7700
 Weyers Cave, VA • (540) 234-0999



MOTOR COMPANY
www.crookmotors.com

\$59,500



**2020
 72"
 Raised
 Roof
 Sleeper**

2020 Freightliner Cascadia 126 72" Raised Roof Sleeper, (2) Bunks, Detroit DD15 400 HP, DT12 Automatic Transmission, Approx. 451,519 Miles, Air Ride Suspension, 13,300# Front, 40,000# Rear, Power Steering, A/C, 237" WB, Thermo King APU, Refrigerator, Stk #1010580.....\$59,500

\$59,500



**2020
 72"
 Raised
 Roof
 Sleeper**

2020 Freightliner Cascadia 125 72" Raised Roof Sleeper, (2) Bunks, Detroit DD15 455 HP, DT12 Automatic Transmission, Approx. 503,598 Miles, 13,300# Front, 40,000# Rear, Air Ride Suspension, 228" WB, P/S, A/C, Park Smart APU, Power Inverter, Stk #1239486.....\$59,500

\$59,500



**2021
 80"
 Raised
 Roof
 Sleeper**

2021 Peterbilt 579 80" Raised Roof Sleeper, (2) Bunks, Cummins X15 400 HP, Automatic Transmission, Approx. 527,171 Miles, 13,200# Front, 40,000# Rear, Air Ride Suspension, 238" WB, P/S, A/C, Refrigerator, Tank Fairings, Cab Extender Fairings, Stk #1159701.....\$59,500

\$52,500



**2021
 80"
 Raised
 Roof
 Sleeper**

2021 Peterbilt 579 80" Raised Roof Sleeper, (2) Bunks, Cummins X15 400 HP, Automatic Transmission, Approx. 586,066 Miles, 13,200# Front, 40,000# Rear, Air Ride Suspension, 238" WB, P/S, A/C, Refrigerator, Tank Fairings, Cab Extender Fairings, Stk #1137587.....\$52,500

\$49,750



**2019
 73"
 Raised
 Roof
 Sleeper**

2019 International LT625 73" Raised Roof Sleeper, (2) Bunks, Cummins X15 450 HP, Auto Trans., Approx. 382,409 Miles, 13,200# Front, 40,000# Rear, Air Ride Susp., 234" WB, P/S, A/C, Espar Bunk Heater, Stk #1239747.....\$49,750

\$49,750



**2019
 73"
 Raised
 Roof
 Sleeper**

2019 International LT625X4 73" Raised Roof Sleeper, (2) Bunks, Cummins X15 450 HP, Auto Trans., Approx. 375,418 Miles, 13,200# Front, 40,000# Rear, Air Ride Suspension, 234" WB, P/S, A/C, Carrier Comfort Pro APU, Stk #1239746.....\$49,750

Crook Motors - C33

EXCEL TRUCK GROUP

www.exceltg.com



Albemarle, NC • (800) 438-2260
 Charlotte, NC • (704) 597-1110
 Chesapeake, VA • (757) 424-3000
 Chester, VA • (804) 768-4600
 Roanoke, VA • (540) 777-7700
 Weyers Cave, VA • (540) 234-0999



MOTOR COMPANY
www.crookmotors.com

\$49,500

**2020
 Raised
 Roof
 Sleeper**



2020 Freightliner PT126SLP Raised Roof Sleeper, (2) Bunks, Detroit DD15 400 HP, DT12 Auto Trans., Approx. 581,424 Miles, 13,300# Front, 40,000# Rear, Air Ride Susp., 231" WB, Power Steering, A/C, Espar Bunk Heater, Air Ride Passenger Seat, Heated/Vented Driver Seat, Stk #1021491.....\$49,500

\$43,500

**2020
 76"
 High
 Rise
 Sleeper**



2020 Kenworth T680 80" High Rise Sleeper, (2) Bunks, Paccar MX13 405 HP, Automatic Transmission, Approx. 533,123 Miles, 12,000# Front, 40,000# Rear, Air Ride Suspension, 232" WB, Power Steering, A/C, Stk #1241163.....\$43,500

\$39,750

2017 60" High Rise Sleeper



2017 Volvo VNL760 60" High Rise Sleeper, (2) Bunks, Volvo D13 455 HP, AT02612 Auto Trans., Approx. 580,617 Miles, Air Ride Susp., 12,500# Front, 40,000# Rear, Aluminum Wheels, P/S, A/C, 235" WB, Dinette, Wheel-to-Wheel Fairings, Stk #1202438.....\$39,750

\$39,750

2018 60" Sleeper



2018 Volvo VNL670 60" Sleeper, Volvo D13 425 HP, AT2612F 12-Speed Trans., Approx. 494,049 Miles, Air Ride Suspension, 12,350# Front, 38,000# Rear, P/S, A/C, 213" WB, Wheel-to-Wheel Fairings, Stk #17118.....\$39,750

\$39,750

2016 High Rise Sleeper



2016 Freightliner Cascadia High Rise Sleeper, Detroit DD15 400 HP, DT12 Auto Trans., Approx. 418,502 Miles, 12,000# Front, 40,000# Rear, Air Ride Susp., 230" WB, P/S, A/C, Aluminum Tanks, Stk #1000581.....\$39,750

\$29,750

2016 72" Mid Roof Sleeper



2016 Freightliner Cascadia 125 72" Mid Roof Sleeper, Detroit DD15 400 HP, FRO-16210C 10-Speed Trans., Approx. 657,283 Miles, 12,000# Front, 40,000# Rear, Air Ride Susp., Aluminum Wheels, Power Steering, A/C, 228" WB, Stk #1026331.....\$29,750

\$14,750

2006 58" Mid Roof Sleeper



2006 Freightliner Columbia 120 58" Mid Roof Sleeper, MBE 4000 450 HP, 10-Speed OD Trans., 12,000# Front, 40,000# Rear, Air Ride Susp., 275" WB, P/S, A/C, Steerable Lift Axle, Stk #1000007.....\$14,750

\$12,750

2013 Tandem Axle Day Cab



2006 Volvo VNL 60" Condo Sleeper, Volvo D12 465 HP, FRLO-16410C 10-Speed Transmission, Approx. 639,849 Miles, 12,000# Front, 40,000# Rear, Air Ride Suspension, 224" WB, Single Bunk, Sold As-Is, Stk #1236629.....\$12,750

Crook Motors - C34

Crook Motor Company
 PO Box 1060
 Albemarle, NC 28002

PRSR STD
 US Postage
 PAID
 Crook Motor Co.

ELECTRONIC SERVICE REQUESTED

EXCEL
 TRUCK GROUP

CRUOK
 MOTOR COMPANY



**Your Destination for Parts, Service & Sales
 in Virginia and the Carolinas!**

Albemarle, NC
 1483 HWY 52 North
 (800) 438-2260
 FREIGHTLINER W CAT C
 DETROIT

Charlotte, NC
 4633 Equipment Dr
 (704) 597-1110
 FREIGHTLINER W CAT C
 DETROIT RIZON

Chesapeake, VA
 821 Curtis Saunders Ct
 (757) 424-3000
 FREIGHTLINER W KALBAR OTTAWA CAT
 DETROIT

Chester, VA
 901 W. Hundred Rd
 (804) 768-4600
 FREIGHTLINER MACH WABASH KALBAR OTTAWA
 CAT C DETROIT RIZON

Columbia, SC
 2790 Shop Rd
 (803) 376-4455
 FREIGHTLINER W CAT C
 DETROIT

Fredericksburg, VA
 3400 Lee Hill Dr
 (888) 230-1514
 FREIGHTLINER W CAT C
 DETROIT

Glen Allen, VA
 11102 Washington HWY
 (804) 798-2906
 FREIGHTLINER W KALBAR OTTAWA CAT
 DETROIT

Lexington, SC
 1828 Two Notch Rd
 (803) 359-0950
 FREIGHTLINER W CAT C
 DETROIT

Roanoke, VA
 267 Lee HWY
 (540) 777-7700
 FREIGHTLINER W MACH KALBAR OTTAWA
 WABASH CAT C DETROIT

Rock Hill, SC
 1170 Porter Rd
 (803) 576-3900
 FREIGHTLINER W CAT C
 DETROIT

Statesville, NC
 2221 International Dr
 (704) 252-5400
 FREIGHTLINER W CAT
 DETROIT

Weyers Cave, VA
 3243 Lee HWY
 (540) 234-0999
 FREIGHTLINER W WABASH
 KALBAR OTTAWA CAT C DETROIT