

HEAVY DUTY

TRUCKS AND TRAILERS



EXCEL
TRUCK GROUP®

ROOK
MOTOR COMPANY

APRIL 2025

EXCEL

TRUCK GROUP®

ROOK

MOTOR COMPANY

A DIVISION OF EXCEL TRUCK GROUP.

2023 FREIGHTLINER MT55 WALK IN VAN



**20' MORGAN OLSON • 6.6L 380 HP GASOLINE ENGINE
ALLISON 2205 TRANSMISSION
SWING REAR DOOR**

... \$88,888 ...



2026 FREIGHTLINER M2106's

**(10) AVAILABLE WITH 11R22.5 & (10) AVAILABLE WITH 19.5LP
ALL DERATED TO 26K GVWR, 142" CA, VERTICAL EXHAUST,
CUMMINS B6.7 250 HP, ALLISON 3500RDS.
LOCATED IN CHARLOTTE, NC**

... CALL FOR PRICE ...

(5) 2026 FREIGHTLINER 116DC's

**192" WB, DETROIT DD13 470 HP, DT12 AUTO TRANSMISSION,
3.08 RATIO, 12.5/40K AXLES, DETROIT ASSURANCE.
LOCATED IN CHARLOTTE, NC**

... CALL FOR PRICE ...



BRAND NEW 2024 & 2025 ISUZUS AVAILABLE



**2025 ISUZU FTR
CUMMINS ISB6.7 260 HP
ALLISON 2500RDS-P AUTO TRANS.
\$93,900**



**2024 ISUZU FTR
CUMMINS ISB 260 HP
ALLISON 2500RDS-P AUTO TRANS.
\$84,500**



**2024 ISUZU NPR-HD
ISUZU 6.6L 350 HP
AUTOMATIC TRANSMISSION
\$69,800**



**2025 ISUZU NRR
ISUZU 350 HP
ALLISON 1000RDS-P AUTO TRANS.
\$64,900**

EXCEL TRUCK GROUP

www.exceltg.com



Albemarle, NC • (800) 438-2260
 Charlotte, NC • (704) 597-1110
 Chesapeake, VA • (757) 424-3000
 Chester, VA • (804) 768-4600
 Roanoke, VA • (540) 777-7700
 Weyers Cave, VA • (540) 234-0999



www.crookmotors.com

\$79,750

2019 Freightliner M2106 24' x 102" Aluminum Van, Cummins B6.7 240 HP, Allison 2500RDS Automatic Transmission, Approx. 16,085 Miles, Air Ride Suspension, 10,000# Front, 17,500# Rear, 26,000# GVWR, Steel Wheels, P/S, A/C, 255" WB, (3) Rows E-Track, Aluminum Roof, Curbside Door, Dual 50 Gallon Aluminum Tanks, Stk #1019866.....\$89,750



**2019
24'
Aluminum
Van**

\$79,750

2019 Freightliner M2106 24' x 102" Aluminum Van, Cummins B6.7 240 HP, Allison 2500RDS Automatic Transmission, Approx. 92,736 Miles, Air Ride Suspension, 10,000# Front, 17,500# Rear, 26,000# GVWR, Aluminum Wheels, P/S, A/C, 255" WB, 3,500# Palfinger Tuckaway Lift Gate, Dual Row Horizontal E-Track, Solid Roof, Stk #1240451.....\$79,750



**2019
24'
Aluminum
Van**

\$79,500



**2022
26'
Aluminum
Van**

\$79,500 Ea.



**(4)
2020
26'
Aluminum
Vans
w/ 6' Attic**

2022 Freightliner M2106 26' x 102" Aluminum Van, Cummins B6.7 280 HP, Allison 2500HS Auto Trans., Approx. 99,335 Miles, Air Ride Susp., 10,000# Front, 18,000# Rear, 26,000# GVWR, Aluminum/Steel Wheels, P/S, A/C, 270" WB, 2,500# Maxon Tuckaway Lift Gate, Translucent Roof, (1) Row E-Track, Stk #1234169.....\$79,500

(5) 2020 International 26' x 96" Extended Cab Aluminum Vans w/ 6' Attic, Cummins B6.7 240 HP, Allison 2500RDS Auto Trans., Approx. 98,602 - 117,707 Miles, Air Ride Susp., 10,000# Front, 19,000# Rear, 25,999# GVWR, P/S, A/C, 280" WB, Swing Roadside Door, Double Swing Curbside Door, Loading Ramps, Lane Departure, Side View Camera, Stk #1247272, 1247275, 1247277, 1247279.....\$79,500 Ea.

EXCEL TRUCK GROUP



Albemarle, NC • (800) 438-2260
 Charlotte, NC • (704) 597-1110
 Chesapeake, VA • (757) 424-3000
 Chester, VA • (804) 768-4600
 Roanoke, VA • (540) 777-7700
 Weyers Cave, VA • (540) 234-0999



www.crookmotors.com

\$74,500

**2018
24'
Crew Cab
Aluminum
Van**



\$74,500

**2020
24'
Aluminum
Van**



2018 Freightliner M2106 24' x 102" Crew Cab Aluminum Van, Cummins B6.7 220 HP, Allison 2200RDS Auto Trans., Approx. 88,693 Miles, Air Ride Susp., 10,000# Front, 19,000# Rear, 26,000# GVWR, Steel Wheels, P/S, A/C, 278" WB, 3,000# Maxon Tuckaway Lift Gate, Aluminum Roof, Aluminum Floor, (2) Rows E-Track, Stk #1241371.....\$74,500

2020 Freightliner M2106 24' x 96" Aluminum Van, DD 5.51L 240 HP, Allison 2200HS Automatic Transmission, Approx. 112,363 Miles, Air Ride Suspension, 10,000# Front, 19,000# Rear, 26,000# GVWR, Steel Wheels, P/S, A/C, 252" WB, 3,000# Rail Gate, Translucent Roof, Stk #1129001.....\$74,500

\$72,500

**2022
26'
Aluminum
Van**



\$59,750

**2018
20'
Aluminum
Van**



2022 Freightliner M2106 26' x 102" Aluminum Van, Cummins B6.7 280 HP, Allison 2500HS Automatic Transmission, Approx. 134,387 Miles, Air Ride Suspension, 10,000# Front, 19,000# Rear, 26,000# GVWR, Aluminum/Steel Wheels, P/S, A/C, 270" WB, 2,500# Maxon Tuckaway Lift Gate, Stk #1240254.....\$72,500

2018 Freightliner M2106 20' x 96" Aluminum Van, Cummins ISB, Allison 2500RDS Automatic Transmission, Approx. 159,328 Miles, Air Ride Suspension, 10,000# Front, 17,500# Rear, 26,000# GVWR, P/S, A/C, 228" WB, Stk #1233928.....\$59,750

\$42,500

**2017
26'
Aluminum
Van**



\$21,500

**2012
26'
Aluminum
Van**



2017 Freightliner M2106 26' x 102" Aluminum Van, Cummins ISB6.7 260 HP, Allison 2500HS Auto Trans., Air Ride Susp., 12,000# Front, 21,000# Rear, Steel Wheels, P/S, A/C, 270" WB, 5,500# Maxon Rail Gate, Solid Roof, (2) Rows E-Track, Wood Floor, Stk #1240402.....\$42,500

2012 Freightliner M2106 26' x 102" Aluminum Van, Cummins ISB6.7 250 HP, Allison 2500HS Automatic Transmission, Approx. 274,473 Miles, Air Ride Suspension, 12,000# Front, 21,000# Rear, Steel Wheels, Power Steering, A/C, 270" WB, 2,500# Anthony Tuckaway Lift Gate, Stk #1233335.....\$21,500

EXCEL TRUCK GROUP

www.exceltg.com



Albemarle, NC • (800) 438-2260
 Charlotte, NC • (704) 597-1110
 Chesapeake, VA • (757) 424-3000
 Chester, VA • (804) 768-4600
 Roanoke, VA • (540) 777-7700
 Weyers Cave, VA • (540) 234-0999



www.crookmotors.com

\$89,750



**2017
 26'
 Reefer
 Van**

2017 International 4300SBA 26' x 102" Aluminum Reefer Van, Carrier Supra 860 (642 Hours), Cummins ISB 260 HP, Allison 2500RDS Automatic Transmission, Approx. 98,156 Miles, Air Ride Suspension, 25,999# GVWR, Power Steering, A/C, 272" WB, Electric Over Hyd. Dock Levelers, Stk #17212.....\$89,750

\$84,750



**2017
 18'
 Reefer
 Van**

2017 Freightliner M2106 18' x 96" Aluminum Reefer Van, Thermo King T-880R Whisper Unit (7,847 Hours), Cummins ISB6.7 240 HP, Allison 2500HS Auto Trans., Approx. 157,472 Miles, Air Ride Susp., 10,000# Front, 17,500# Rear, 26,000# GVWR, P/S, A/C, Flat Non-Skid Floor, Kemlite Lined, (3) Rows E-Track, Rollup Rear Door, 3,000# Maxon Tuckaway Lift Gate, Stk #1237706.....\$84,750

\$79,750



**2018
 18'
 Reefer
 Van**

2018 Freightliner M2106 18' x 96" Aluminum Reefer Van, Carrier Stealth Supra 760 Unit (6,009 Hours), Cummins B6.7 240 HP, Allison 2500HS Auto Trans., Approx. 105,711 Miles, Air Ride Susp., 26,000# GVWR, Steel Wheels, P/S, A/C, Extruded Aluminum Floor, Pull Out Ramp, Curbside Door, Stk #1220922.....\$79,750

\$79,750



**2018
 24'
 Reefer
 Van**

2018 Freightliner M2106 24' x 102" Aluminum Reefer Van, Carrier Unit (15,133 Hours, 30 Gallon Steel Fuel Tank), Cummins L9 300 HP, Allison 3000HS Auto Trans., Approx. 145,893 Miles, Air Ride Susp., 14,320# Front, 40,000# Rear, P/S, A/C, Flat Non-Skid Floor, Diff Lock, 4,400# Maxon Rail Gate, Stk #1215523.....\$79,750

\$79,750

2016 26' Reefer Van



2016 Freightliner M2106 26' x 102" Aluminum Reefer Van, Thermo King T-880R Whisper Unit, Cummins ISL 270 HP, Allison 3000HS Auto Trans., Approx. 101,178 Miles, Air Ride Susp., 52,000# GVWR, P/S, A/C, 270" WB, 5,500# Maxon Rail Gate, (4) Rows Horizontal Log Post, 18" Aluminum Rub Rail, Stk #1239993.....\$79,750

\$69,750

2019 16' Reefer Van



2019 Isuzu NPR-XD 16' x 96" Aluminum Reefer Van, Carrier Supra 660 Unit (2,330 Hours), Isuzu Diesel 210 HP, Auto Trans., Approx. 72,184 Miles, Spring Susp., 16,000# GVWR, P/S, A/C, Aluminum Non-Skid Floor, (2) Rows E-Track, Electric Standby, Walco Tuckaway Lift Gate, Rollup Rear Door, Stk #1215519.....\$69,750

\$39,000

2020 26' Aluminum Van



2017 Freightliner M2106 22' Aluminum Reefer Van, Thermo King Unit, Cummins ISB 240 HP, Allison 2500HS Auto Trans., Approx. 334,855 Miles, Air Ride Susp., 26,000# GVWR, Steel Wheels, Power Steering, A/C, Roll Up Rear Door, Stk #1179854.....\$39,000

EXCEL
TRUCK GROUP®

CRUOK
MOTOR COMPANY
A DIVISION OF EXCEL
TRUCK GROUP



MEET THE SALES TEAM

Meet the driving force behind our Used Truck Sales! Based across Virginia and the Carolinas, our Used Truck Sales Team is committed to finding the perfect pre-owned trucks for your fleet. From helping you pick the right vehicle to offering unbeatable customer service, this team always goes the extra mile.



JACK BRUDER
Chester, VA
(540) 656-3711

jbruder@exceltg.com



CHET CHETNEY
Chesapeake, VA
(757) 840-6360

jchetney@exceltg.com



EVAN OTEY
Roanoke, VA
(540) 480-0065

eotey@exceltg.com



LEE SAYLOR
Weyers Cave, VA
(540) 769-9774

lsaylor@exceltg.com



HORACE GRIFFIN
Albemarle, NC
(704) 985-6161

hgriffin@crookmotors.com



PAYDEN MORRIS
Albemarle, NC
(704) 985-6828

pmorris@crookmotors.com



STEVEN RIDOLFO
Rock Hill, SC
(803) 833-9283

sridolfo@exceltg.com

EXCEL TRUCK GROUP

www.exceltg.com



Albemarle, NC • (800) 438-2260
 Charlotte, NC • (704) 597-1110
 Chesapeake, VA • (757) 424-3000
 Chester, VA • (804) 768-4600
 Roanoke, VA • (540) 777-7700
 Weyers Cave, VA • (540) 234-0999



www.crookmotors.com

\$99,500



2017 Freightliner 114SD Cab and Chassis, Detroit DD13 350 HP, Allison 4000RDS Automatic Transmission, Approx. 238,372 Miles, Air Ride Suspension, 20,000# Front, 46,000# Rear, 66,000# GVWR, Power Steering, A/C, Stk #1240157.....\$99,500

2017
 Cab
 and
 Chassis

\$89,750



2014 Western Star 4700 Cab and Chassis, Detroit DD13 450 HP, Allison 4500RDS Automatic Transmission, Approx. 313,679 Miles, Tuf Trac Suspension, 20,000# Front, 46,000# Rear, 66,000# GVWR, Power Steering, A/C, Locking Rears, 100 Gallon Aluminum Tank, Stk #1241252.....\$84,750

2014
 Cab
 and
 Chassis

\$79,750



2019
 Cab
 and
 Chassis

\$79,750



2017
 Cab
 and
 Chassis

2019 Freightliner M2106 Cab and Chassis, Cummins L9 300 HP, Allison 3000RDS Automatic Transmission, Approx. 94,717 Miles, Air Ride Suspension, 12,000# Front, 21,000# Rear, P/S, A/C, 204" WB, Stk #1230926.....\$79,750

2017 Kenworth T800 Cab and Chassis, Cummins ISX12 385 HP, Eaton Ultrashift Plus Automatic Transmission, Approx. 262,714 Miles, Air Ride Suspension, 14,320# Front, 40,000# Rear, All Aluminum Wheels, Power Steering, A/C, 240" WB, 168" CT, 288" EOF, PTO, Stk #1211429.....\$79,750

EXCEL TRUCK GROUP

www.exceltg.com



Albemarle, NC • (800) 438-2260
 Charlotte, NC • (704) 597-1110
 Chesapeake, VA • (757) 424-3000
 Chester, VA • (804) 768-4600
 Roanoke, VA • (540) 777-7700
 Weyers Cave, VA • (540) 234-0999



www.crookmotors.com

\$79,750

**2014
Cab
and
Chassis**



2014 Freightliner M2112 Cab and Chassis, Detroit DD13 410 HP, **FO-14E310C-LAS Ultra Shift Automatic Transmission**, Approx. 284,766 Miles, Air Ride Suspension, 14,600# Front, 40,000# Rear, 54,600# GVWR, Aluminum Wheels, P/S, A/C, 187" WB, 123" CA, Double Frame, Stk #1239497.....\$79,750

\$79,750

**2014
Cab
and
Chassis**



2014 Freightliner M2112 Cab and Chassis, Detroit DD13 410 HP, **Eaton Ultrashift Transmission**, Approx. 163,927 Miles, Air Ride Suspension, 16,000# Front, 40,000# Rear, 56,000# GVWR, Aluminum Wheels, 230" WB, Power Steering, A/C, Double Frame, 168" CA, 259" EOF, Stk #1244983.....\$79,750

\$79,750

**2019
Cab
and
Chassis**



2019 Freightliner M2112 Cab and Chassis, Detroit DD13 370 HP, **Allison 3000RDS Automatic Transmission**, Approx. 271,610 Miles, Air Ride Suspension, 14,600# Front, 40,000# Rear, 54,600# GVWR, Aluminum Wheels, 228" WB, Power Steering, A/C, PTO, 165" CA, 270" EOF, Stk #1244982.....\$79,750

\$76,500

**2018
Cab
and
Chassis**



2018 Freightliner M2106 Cab and Chassis, Cummins L9 350 HP, **Allison 3000RDS Automatic Transmission**, Approx. 144,777 Miles, Air Ride Suspension, 12,000# Front, 40,000# Rear, Aluminum Wheels, 252" WB, Power Steering, A/C, 189" CA, 285" EOF, Stk #1233551.....\$76,500

\$69,750

**2016
Cab
and
Chassis**



2016 Freightliner M2106 Cab and Chassis, Cummins ISL 350 HP, **Allison 3000RDS Automatic Transmission**, Approx. 141,829 Miles, Air Ride Susp., 12,000# Front, 40,000# Rear, Steel Wheels, Power Steering, A/C, 252" WB, 184" CA, Suspension Dump, Stk #1224454.....\$69,750

\$69,750

**2018
Cab
and
Chassis**



2018 Freightliner M2106 Cab and Chassis, Cummins L9 350 HP, **Allison 3000HS Automatic Transmission**, Approx. 161,000 Miles, Air Ride Susp., 14,600# Front, 40,000# Rear, Power Steering, A/C, 249" WB, 185" CA, Stk #1232335.....\$69,750

EXCEL TRUCK GROUP

www.exceltg.com



Albemarle, NC • (800) 438-2260
 Charlotte, NC • (704) 597-1110
 Chesapeake, VA • (757) 424-3000
 Chester, VA • (804) 768-4600
 Roanoke, VA • (540) 777-7700
 Weyers Cave, VA • (540) 234-0999



www.crookmotors.com

\$64,750



**2016
Cab
and
Chassis**

2016 Freightliner M2106 Cab and Chassis, Cummins ISL 350 HP, FRO-11210B 10-Speed OD Transmission, **Approx. 186,031 Miles**, Air Ride Suspension, 14,600# Front, 40,000# Rear, 54,600# GVWR, Steel Wheels, Power Steering, A/C, 278" WB, 212" CA, Dual 50 Gallon Aluminum Tanks, **Stk #1239580**.....\$64,750

\$54,750



**2017
Cab
and
Chassis**

2017 Freightliner M2106 Cab and Chassis, Cummins ISB 325 HP, **Allison 3000RDS Auto Trans.**, **Approx. 143,114 Miles**, Air Ride Susp., 12,000# Front, 21,000# Rear, Aluminum Wheels, 226" WB, P/S, A/C, Diff Lock, **Stk #1235590**.....\$54,750

\$49,750



**2017
Cab
and
Chassis**

2017 Freightliner M2106 Cab and Chassis, Cummins ISB 325 HP, **Allison 3000RDS Auto Trans.**, **Approx. 195,315 Miles**, Air Ride Susp., 12,000# Front, 21,000# Rear, All Aluminum Wheels, P/S, A/C, 226" WB, 160" CA, Backup Camera, **Stk #1229031**.....\$49,750

\$49,750



**2018
Cab
and
Chassis**

2018 Freightliner M2106 Cab and Chassis, Cummins B6.7 325 HP, **Allison 3000RDS Automatic Transmission**, **Approx. 182,535 Miles**, Air Ride Suspension, 12,000# Front, 21,000# Rear, Power Steering, A/C, 216" WB, 152" CA, **Stk #1237795**.....\$49,750

\$39,750



**2017
Cab
and
Chassis**

2017 Freightliner M2106 Cab and Chassis, Cummins ISB 6.7 325 HP, **Allison 2500RDS Automatic Transmission**, **Approx. 196,184 Miles**, Air Ride Suspension, 10,000# Front, 19,000# Rear, 26,000# GVWR, Steel Wheels, Power Steering, A/C, 252" WB, 185" CA, 283" EOF, **Stk #1241118**.....\$39,750

\$38,750



**2010
Cab
and
Chassis**

2010 Kenworth T370 Cab and Chassis, Paccar PX8 285 HP, **Allison 3000RDS Automatic Transmission**, **Approx. 197,455 Miles**, Air Ride Susp., 12,000# Front, 21,000# Rear, 33,000# GVWR, 150" CA, 217" WB, P/S, A/C, **Stk #1239500**.....\$38,750

EXCEL TRUCK GROUP

www.exceltg.com



Albemarle, NC • (800) 438-2260
 Charlotte, NC • (704) 597-1110
 Chesapeake, VA • (757) 424-3000
 Chester, VA • (804) 768-4600
 Roanoke, VA • (540) 777-7700
 Weyers Cave, VA • (540) 234-0999



www.crookmotors.com

\$219,500 Ea.

(3)
 2023
 20'
 Quint
 Axle
 Dumps



(3) 2023 Freightliner 122SD 20' Quint Axle Dumps, Detroit DD13 470 HP, Allison 4500RDS Automatic Transmission, Approx. 111,291, 131,149 and 105,157 Miles, 18,000# Front, 46,000# Rear, (3) Steerable Lift Axles, Tuf Trac Suspension, Aluminum Wheels, Power Steering, A/C, Double Frame, 2-Way Gate, Electric Tarp, Trac and Diff Lock, 60" Sides, Stk #1154572, 1155040, 1155042.....\$219,500 Ea.

\$209,500 Ea.

(8)
 2023
 18'
 Quad
 Axle
 Dumps



(8) 2023 Freightliner 122SD 18' Quad Axle Dumps, Detroit DD13 470 HP, Allison 4500RDS Automatic Transmission, Approx. 78,444 - 115,897 Miles, 18,000# Front, 46,000# Rear, (2) Steerable Lift Axles, Tuf Trac Suspension, Aluminum Wheels, Power Steering, A/C, Double Frame, 2-Way Gate, Electric Tarp, Trac and Diff Lock, 60" Sides, Stk #1155014, 1155015, 1155019, 1155020, 1155021, 1155022, 1155024, 1161177.....\$209,500 Ea.

\$209,500 Ea.

(2)
 2023
 18'
 Quad
 Axle
 Dumps



(2) 2023 Freightliner 122SD 18' Quad Axle Dumps, Detroit DD13 470 HP, Allison 4500RDS Automatic Transmission, Approx. 96,444 and 106,168 Miles, 18,000# Front, 46,000# Rear, (2) Steerable Lift Axles, Tuf Trac Suspension, Aluminum Wheels, Power Steering, A/C, Double Frame, 2-Way Gate, Electric Tarp, Trac and Diff Lock, 60" Sides, Stk #1155023, 1155025.....\$209,500 Ea.

\$209,500 Ea.

(3)
 2023
 18'
 Quad
 Axle
 Dumps



(3) 2023 Western Star 4700 18' Quad Axle Dumps, Cummins X12, Allison 4500RDS Automatic Transmission, Approx. 79,287 - 99,619 Miles, 18,000# Front, 46,000# Rear, (2) Steerable Lift Axles, Tuf Trac Suspension, Aluminum Wheels, Power Steering, A/C, Double Frame, 2-Way Gate, Electric Tarp, Trac and Diff Lock, 60" Sides, Stk #1149903, 1154559, 1155287.....\$209,500 Ea.

\$169,500

2018
 16'
 Tri-Axle
 Dump



2018 Mack GU713 Tri-Axle Dump, Mack MP8 455 HP, T310M/MLR 8ll Transmission, Approx. 127,046 Miles, 20,000# Front, 44,000# Rear, 20,000# Rigid Lift Axle, Camelback Suspension, Aluminum/Steel Wheels, Power Steering, A/C, Double Frame, 60" Sides, Electric Tarp, Straight Gate, 12" Spreader Pan, Stk #1242985.....\$169,500

\$159,500

2018
 20'
 Quint
 Axle
 Dump



2018 Kenworth T880 20' Quint Axle Dump, Paccar MX13 455 HP, Allison 4500RDS Automatic Transmission, Approx. 505,359 Miles, 20,000# Front, 46,000# Rear, (3) 13,500# Lift Axles, Chalmers Suspension, Aluminum Wheels, Power Steering, A/C, Full Locking Rears, Electric Tarp, High Lift Gate, Asphalt Taper, 100 Gallon Aluminum Tank, Stk #1245633.....\$159,500

EXCEL TRUCK GROUP

www.exceltg.com



Albemarle, NC • (800) 438-2260
 Charlotte, NC • (704) 597-1110
 Chesapeake, VA • (757) 424-3000
 Chester, VA • (804) 768-4600
 Roanoke, VA • (540) 777-7700
 Weyers Cave, VA • (540) 234-0999



www.crookmotors.com

\$159,500

2018 20' Quint Axle Dump



2018 Kenworth T880 20' Quint Axle Dump, Pacar MX13 455 HP, Allison 4500RDS Auto Trans., Approx. 494,926 Miles, 20,000# Front, 46,000# Rear, (3) 13,500# Lift Axles, Chalmers Susp., P/S, A/C, Full Locking Rears, Electric Tarp, High Lift Gate, Asphalt Taper, 100 Gallon Aluminum Tank, Stk #1245631.....\$159,500

\$149,500

2017 16-1/2' Quad Axle Dump



2017 Kenworth T880 16-1/2' Quad Axle Dump, Pacar MX13 455 HP, Ultrashift Trans., Approx. 511,485 Miles, 20,000# Front, 46,000# Rear, (2) 11,020# Lift Axles, Chalmers Susp., Aluminum Wheels, Power Steering, A/C, Full Locking Rears, Electric Tarp, High Lift Gate, Asphalt Taper, 100 Gallon Aluminum Tank, Stk #1245628.....\$149,500

\$149,500 Ea.

(2) 2018 17' Quad Axle Dumps



(2) 2018 Kenworth T880 17' Quad Axle Dumps, Pacar MX13 455 HP, Eaton Auto Trans., Approx. 430,152 and 397,397 Miles, 20,000# Front, 46,000# Rear, (2) 13,500# Lift Axles, Chalmers Susp., P/S, A/C, Full Locking Rears, Electric Tarp, High Lift Gate, Asphalt Taper, Stk #1245629, 1245630.....\$149,500 Ea.

\$149,500

2015 20-Yard Tri-Axle Dump



2015 Freightliner 114SD 20-Yard Tri-Axle Dump, Detroit DD13 450 HP, Allison 4000RDS Automatic Transmission, Approx. 61,952 Miles, 20,000# Front, 46,000# Rear, (1) Steerable Lift Axle, Walking Beam Susp., P/S A/C, Straight Gate, (3) Grain Chutes, Double Frame, Electric Tarp, Pintle Hitch w/Glad Hands, Stk #1244476.....\$149,500

\$149,500

2015 19' Tri-Axle Dump



2015 Freightliner 114SD 19' Tri-Axle Dump, Detroit DD13 450 HP, Allison 4000RDS Automatic Transmission, Approx. 72,010 Miles, 20,000# Front, 46,000# Rear, (1) Steerable Lift Axle, Air Ride Suspension, P/S, A/C, Double Frame, Electric Tarp, Pintle Hitch, 50" Side Height, Stk #1244928.....\$149,500

\$139,750

2016 18' Quad Axle Dump



2016 Volvo VHD 18' Quad Axle Steel Dump, Volvo D11 385 HP, Allison 4500RDS Automatic Transmission, Approx. 279,505 Miles, Volvo T Ride Suspension, 20,000# Front, 40,000# Rear, (2) 11,020# Steerable Lift Axles, Aluminum and Steel Wheels, 232" WB, Power Steering, A/C, Slant Gate, 42" Sides, 8" Boards, 50" Side Height, Electric Tarp, Full Locking Rears, Stk #1233314.....\$139,750

\$139,500

2017 19' Quad Axle Dump



2017 Western Star 4700 19' Quad Axle Dump, Detroit DD13 470 HP, FRO-16210C 10-Speed Trans., Approx. 421,159 Miles, 20,000# Front, 40,000# Rear, (2) 13,200# Lift Axles, Tuf Trac Suspension, P/S A/C, High Lift Gate, Electric Tarp, Full Locking Rears, Stk #1245636.....\$139,500

\$59,750

2016 20' Flatbed Dump



2018 Freightliner M2106 20' x 102" Steel Flatbed Dump, Cummins B6.7 250 HP, FRO-14210C 10-Speed Transmission, Approx. 124,580 Miles, 12,000# Front, 21,000# Rear, 33,000# GVWR, Air Ride Suspension, Aluminum Wheels, Power Steering, A/C, Air Suspension Dump, Under Bed Toolbox, 50 Gallon Aluminum Tank, Stk #1239221.....\$59,750

\$49,500

2007 17' Tandem Axle Dump



2007 Sterling LT9500 17' Tandem Axle Steel Dump, Mercedes MBE 460 HP, RTO-16908LL Trans., Approx. 367,921 Miles, Tuf Trac Suspension, 18,000# Front, 40,000# Rear, 58,000# GVWR, Power Steering, A/C, 210" WB, Pintle Hitch, 45" Sides, 10" Board, Electric Tarp, Stk #1233511.....\$49,500

EXCEL TRUCK GROUP

www.exceltg.com



Albemarle, NC • (800) 438-2260
 Charlotte, NC • (704) 597-1110
 Chesapeake, VA • (757) 424-3000
 Chester, VA • (804) 768-4600
 Roanoke, VA • (540) 777-7700
 Weyers Cave, VA • (540) 234-0999



www.crookmotors.com

\$118,500

2019 24' Flatbed with Moffett Hookup



2019 Freightliner 114SD 24' x 102" Tri-Axle Flatbed with Moffett Hookup, Detroit DD13 410 HP, Allison 4000RDS Auto Trans., Approx. 240,021 Miles, Air Ride Susp., 20,000# Front, 46,000# Rear, P/S, A/C, (13) Winches and Straps, Steel Floor, Stk #1241496.....\$139,500

\$119,500

2019 23-1/2' Flatbed w/Princeton Hookup



2019 Western Star 4700 23-1/2' x 102" Flatbed with Princeton Hookup, Cummins L9 300 HP, Allison 3000RDS Automatic Transmission, Approx. 232,985 Miles, Air Ride Suspension, 14,600# Front, 40,000# Rear, 54,600# GVWR, Power Steering, A/C, (9) Slide Winches, (1) Steel Storage Box, Stk #1242350.....\$119,500

\$119,500

2019 23' Flatbed w/ Princeton Hookup



2019 Western Star 4700 23' x 102" Steel Flatbed with Princeton Hookup, Cummins L9 350 HP, Allison 3000RDS Auto Trans., Approx. 156,932 Miles, Air Ride Susp., 14,600# Front, 40,000# Rear, 54,600# GVWR, P/S, A/C, (7) Winches/Straps, Wood Floor, Under Bed Toolbox, Passenger Bench Seat, Stk #1247072.....\$119,500

\$118,500

2018 25' Flatbed with Moffett Hookup



2018 Freightliner 108SD 25' x 102" Tri-Axle Flatbed with Moffett Hookup, Cummins L9 370 HP, Allison 3000RDS Auto Trans., Approx. 185,259 Miles, Tuf Trac Susp., 20,000# Front, 40,000# Rear, 68,000# GVWR, 12,350# Steerable Lift Axle, P/S, A/C, (12) Winches, Double Framed, Full Locking Rears, Stk #1244442.....\$118,500

\$114,500

2018 24' Flatbed with Moffett Hookup



2018 Freightliner M2106 24' x 102" Steel Flatbed with Moffett Hookup, Cummins L9 300 HP, Allison 3000RDS Automatic Transmission, Approx. 133,710 Miles, Air Ride Suspension, 14,700 Front, 40,000# Rear, P/S, A/C, (8) Winches and Straps, Steel Floor, Dual 50 Gallon Aluminum Tanks, Stk #1240452.....\$114,500

\$107,500

2016 25' Flatbed with Moffett Hookup



2016 Freightliner 108SD 25' x 102" Tri-Axle Flatbed with Moffett Hookup, Cummins ISL 370 HP, Allison 3000RDS Auto Trans., Approx. 289,654 Miles, Tuf Trac Susp., 20,000# Front, 40,000# Rear, 68,000# GVWR, 12,350# Steerable Lift Axle, P/S, A/C, (12) Winches, Double Framed, Full Locking Rears, Stk #1240693.....\$107,500

\$89,750

2019 24' Flatbed with Princeton Hookup



2019 International 24' x 102" Flatbed w/Princeton Hookup, Cummins L9 330 HP, Allison 3000RDS Auto Trans., Approx. 184,129 Miles, Air Ride Susp., 14,000# Front, 40,000# Rear, 54,000# GVWR, P/S, A/C, 272" WB, (6) Winches and Straps, Stk #1242987.....\$89,750

\$89,750

2017 25' Flatbed with Moffett Hookup



2017 Freightliner M2106 25' x 102" Steel Flatbed with Moffett Hookup, Cummins ISL 350 HP, Allison 3000HS Automatic Transmission, Approx. 167,567 Miles, Air Ride Suspension, 16,000# Front, 44,000# Rear, 60,000# GVWR, P/S, A/C, (6) Slide Winches and Straps, Full Locking Rears, (1) Steel Storage Box, Stk #1237708.....\$89,750

\$89,750

2012 24' Flatbed with Hiab Boom



2012 Mack GU813 24' Tri-Axle Flatbed w/Hiab Boom, Mack MP7 395 HP, RTLO-16913A 13-Speed Trans., Approx. 360,457 Miles, Camelback Susp., 20,000# Front, 46,000# Rear, 16,000# Rigid Rear Lift Axle, P/S, A/C, 275" WB, Pintle Hitch w/Gladhands, Remote, (2) Hydraulic Outriggers, Double Frame, Stk #1203891.....\$89,750

EXCEL TRUCK GROUP

www.exceltg.com



Albemarle, NC • (800) 438-2260
 Charlotte, NC • (704) 597-1110
 Chesapeake, VA • (757) 424-3000
 Chester, VA • (804) 768-4600
 Roanoke, VA • (540) 777-7700
 Weyers Cave, VA • (540) 234-0999



MOTOR COMPANY
 www.crookmotors.com

\$159,750

\$89,750

COMING SOON!

**2019
 30'
 VersaTran**



**2014
 28'
 Hydratail
 with
 Fresh
 Overhaul**

2019 Freightliner M2112 30' x 102" Tri-Axle VersaTran, Cummins L9 370 HP, Allison 3000RDS Automatic Transmission, Approx. 149,422 Miles, 20,000# Front, 40,000# Rear, 11,020# Lift Axle, Air Ride Suspension, 289" WB, Power Steering, A/C, 15,000# Electric Winch, 80 Gallon Aluminum Tank, Stk #1246516.....\$159,750

2014 Freightliner M2106 28' x 102" Carrier Miller Hydratail, Cummins ISL 350 HP, Allison 3000RDS Automatic Trans., Approx. 271,203 Miles, 20,000# Front, 40,000# Rear, 60,000# GVWR, Air Ride Suspension, 258" WB, Power Steering, A/C, 20,000# Winch, 30,000# Bed Rating, New Paint, Fresh Overhaul, Stk #1120981.....\$89,750

\$84,500

\$79,750

COMING SOON!

**2018
 28'
 Hydratail**



**2014
 26'
 Hydratail**

2018 Peterbilt PB348 28' x 102" Hydratail, Paccar PX9 350 HP, Allison 3000RDS-P Automatic Transmission, Approx. 258,863 Miles, 20,000# Front, 40,000# Rear, Air Ride Susp., Aluminum Wheels, 269" WB, Power Steering, A/C, 30,000# Bed Capacity, 20,000# Winch, Under Bed Toolbox, Body Remote, Stk #1243900.....\$84,500

2014 Freightliner M2106 26' x 102" Hydratail, Cummins ISL 350 HP, Allison 3000RDS Automatic Transmission, Approx. 239,256 Miles, 20,000# Front, 40,000# Rear, Air Ride Susp., All Aluminum Wheels, 258" WB, Power Steering, A/C, Winch, Strobe, (2) Toolboxes, Stk #1126884.....\$79,750

\$79,750

\$69,750



**2020
 25'
 Hydratail**



**2014
 28'
 Hydratail**

2020 Peterbilt 337 25' x 102" Xtreme Hydratail, Paccar PX7 250 HP, Allison 2500RDS-P Automatic Transmission, Approx. 117,185 Miles, 12,000# Front, 21,000# Rear, 33,000# GVWR, Air Ride Suspension, 258" WB, Power Steering, A/C, 18,000# Bed Capacity, Stk #1233429.....\$79,750

2014 Peterbilt PB348 28' Steel & Wood Hydratail, Paccar PX9 350 HP, Allison 3000RDS Automatic Transmission, Approx. 336,180 Miles, 20,000# Front, 40,000# Rear, Air Ride Susp., Alum. Wheels, 262" WB, Power Steering, A/C, Remote, (2) Storage Boxes, Beacon, Hydraulic Winch, Stk #17180.....\$79,750

EXCEL TRUCK GROUP

www.exceltg.com



Albemarle, NC • (800) 438-2260
 Charlotte, NC • (704) 597-1110
 Chesapeake, VA • (757) 424-3000
 Chester, VA • (804) 768-4600
 Roanoke, VA • (540) 777-7700
 Weyers Cave, VA • (540) 234-0999



www.crookmotors.com

\$139,500

2017
28'
Century
Rollback



2017 Freightliner M2106 28' Tri-Axle Century Steel Rollback, Cummins ISL 350 HP, Allison 3000RDS Automatic Trans., Approx. 258,943 Miles, 20,000# Front, 40,000# Rear, 13,000# Steerable Lift Axle, Air Ride Suspension, Aluminum Wheels, P/S, A/C, 30,000# Bed Rating, 20,000# Winch, Wood Floor, Under Bed Toolboxes, Remote, 80 Gallon Aluminum Tank, Stk #1046962.....\$139,500

\$139,500

2018
28'
Miller
Rollback



2018 Peterbilt PB348 28' Tri-Axle Miller Rollback, Paccar PX9 350 HP, Allison 3000RDS Automatic Transmission, Approx. 237,159 Miles, 20,000# Front, 40,000# Rear, Steerable Lift Axle, Air Ride Suspension, 269" WB, Power Steering, A/C, 20,000# Hydraulic Winch, Steel Floor, (2) Storage Boxes, Double Frame, Remote, 30,000# Bed Rating, 70 Gallon Aluminum Tank, Stk #1243085.....\$139,500

\$116,750

2017
28'
Century
Rollback



2017 Freightliner M2106 28' Century Steel Rollback, Cummins ISL 350 HP, Allison 3000RDS Automatic Trans., Approx. 114,275 Miles, 20,000# Front, 40,000# Rear, 60,000# GVWR, Air Ride Suspension, Aluminum Wheels, P/S, A/C, 20,000# Bed Rating, Steel Floor, (2) Steel Storage Boxes, Remote, 80 Gallon Aluminum Tank, Stk #1080741.....\$116,750

\$115,750

2018
28'
Rollback



2018 Freightliner M2106 28' Steel Rollback, Cummins L9, Allison 3000RDS-P Automatic Trans., Approx. 176,000 Miles, 20,000# Front, 40,000# Rear, 60,000# GVWR, Air Ride Suspension, P/S, A/C, 266" WB, Aluminum Tank, Stk #1247012.....\$115,750

\$114,750

2019
28'
Century
Rollback



2019 Freightliner M2106 28' Century Steel Rollback, Cummins L9 350 HP, Allison 3000RDS Automatic Trans., Approx. 228,544 Miles, 20,000# Front, 40,000# Rear, Air Ride Susp., Aluminum Wheels, P/S, A/C, 30,000# Bed Rating, 20,000# Winch, Under Bed Toolbox, 80 Gallon Aluminum Tank, Stk #1080687.....\$114,750

\$114,500

2018
28'
Century
Rollback



2018 Freightliner M2106 28' Century Steel Rollback, Cummins L9 350 HP, Allison 3000RDS Automatic Trans., Approx. 227,255 Miles, 20,000# Front, 40,000# Rear, 60,000# GVWR, Air Ride Suspension, Aluminum Wheels, P/S, A/C, 30,000# Bed Rating, 20,000# Winch, 80 Gallon Aluminum Tank, Stk #1243841.....\$114,500

EXCEL TRUCK GROUP

www.exceltg.com



Albemarle, NC • (800) 438-2260
 Charlotte, NC • (704) 597-1110
 Chesapeake, VA • (757) 424-3000
 Chester, VA • (804) 768-4600
 Roanoke, VA • (540) 777-7700
 Weyers Cave, VA • (540) 234-0999



www.crookmotors.com

\$112,500



**2017
 28'
 Century
 Rollback**

2017 Peterbilt PB348 28' x 102" Century Rollback, Paccar PX9 350 HP, Allison 3000RDS-P Automatic Transmission, Approx. 189,584 Miles, 20,000# Front, 40,000# Rear, Air Ride Suspension, 269" WB, Power Steering, A/C, 20,000# Winch, 30,000# Bed Capacity, Under Bed Toolboxes, Remote, 70 Gallon Aluminum Tank, Stk #1245109.....\$112,500

\$110,750



**2018
 28'
 Century
 Rollback**

2018 Peterbilt PB348 28' x 102" Century Rollback, Paccar PX9 350 HP, Allison 3000RDS-P Automatic Transmission, Approx. 156,071 Miles, 20,000# Front, 40,000# Rear, Air Ride Suspension, 269" WB, P/S, A/C, 20,000# Winch, 30,000# Bed Capacity, Under Bed Toolboxes, Steel Floor, 70 Gallon Aluminum Tank, Stk #1238997.....\$110,750

\$104,750



**2017
 28'
 Century
 Rollback**

2017 Peterbilt PB348 28' x 102" Century Rollback, Paccar PX9 350 HP, Allison 3000RDS Automatic Transmission, Approx. 264,311 Miles, 20,000# Front, 40,000# Rear, Air Ride Suspension, 270" WB, Power Steering, A/C, 20,000# Winch, Wood Floor, Stinger Hitch, (2) Toolboxes, Double Framed, Stk #1206633.....\$104,750

\$99,750



**2016
 28'
 Century
 Rollback**

2016 Kenworth T370 28' x 102" Century/Miller Rollback, Paccar PX9 350 HP, Allison 3000RDS Auto Trans., Approx. 267,281 Miles, 20,000# Front, 40,000# Rear, Air Ride Susp., 268" WB, P/S, A/C, 20,000# Bed Rating, Hydraulic Winch, Beacon Bar, 6,000# Miller Hydraulic Tow Bar, Stk #1205575.....\$99,750

\$99,500



**2016
 28'
 Century
 Rollback**

2016 Peterbilt PB348 28' x 102" Century Rollback, Paccar PX9 350 HP, Allison 3000RDS-P Automatic Transmission, Approx. 231,039 Miles, 20,000# Front, 40,000# Rear, Air Ride Suspension, 260" WB, Power Steering, A/C, 20,000# Winch, 20,000# Bed Capacity, Steel Floor, (2) Under Bed Toolboxes, Stk #1240833.....\$99,500

\$89,750



**2012
 28'
 Jerr-Dan
 Rollback**

2012 Freightliner M2106 28' x 100" Jerr-Dan Rollback, Cummins ISC 300 HP, RT08709B 9-Speed Transmission, Approx. 181,073 Miles, 20,000# Front, 40,000# Rear, Air Ride Suspension, Steel Wheels, Power Steering, A/C, Wood Floor, Winch, Pintle Hook, (2) Toolboxes, Stk #1123420.....\$89,750

EXCEL TRUCK GROUP

www.exceltg.com



Albemarle, NC • (800) 438-2260
 Charlotte, NC • (704) 597-1110
 Chesapeake, VA • (757) 424-3000
 Chester, VA • (804) 768-4600
 Roanoke, VA • (540) 777-7700
 Weyers Cave, VA • (540) 234-0999



www.crookmotors.com

\$154,750

**2018
Galbreath
Roll
Off**



2018 Freightliner 114SD Galbreath Roll Off, Detroit DD13 525 HP, Allison 4500RDS Automatic Transmission, Approx. 338,264 Miles, 20,000# Front, 46,000# Rear, 66,000# GVWR, Hendrickson Haulmax Suspension, Steel Wheels, Power Steering, A/C, 60,000# Bed Capacity, Stk #1233315.....\$154,750

\$139,500

**2019
4,000
Gallon
Water
Tank**



2019 Freightliner M2106 4,000 Gallon Ledwell Water Tank, Cummins L9 300 HP, Allison 3000RDS Automatic Transmission, Approx. 9,197 Miles, Air Ride Suspension, 18,000# Front, 40,000# Rear, Power Steering, A/C, 196" WB, (5) Sprayers, Rear Hose Reel, Stk #1240407.....\$139,500

\$89,750

**2019
2,000
Gallon
Water
Tank**



2019 Freightliner M2106 2,000 Gallon Ledwell Water Tank, Cummins B6.7, Allison 2500RDS Auto Trans., Approx. 12,004 Miles, Spring Susp., 13,000# Front, 20,000# Rear, P/S, A/C, 164" WB, (5) Sprayers, Rear Hose Reel, Stk #1240408.....\$89,750

\$89,750

**2019
2,000
Gallon
Water
Tank**



2019 Freightliner M2106 2,000 Gallon Ledwell Water Tank, Cummins ISB 200 HP, Allison 2500RDS Automatic Transmission, Approx. 20,631 Miles, Spring Suspension, 13,000# Front, 20,000# Rear, Power Steering, A/C, 162" WB, Front, Rear, Road and Curb Sprayers, Rear Hose Reel, Stk #1222522.....\$89,750

\$79,750

**2018
2,000
Gallon
Water
Tank**



2018 International 4300 2,000 Gallon Water Tank, Cummins 200 HP, Allison 2500RDS-P Automatic Transmission, Approx. 13,681 Miles, Spring Suspension, 13,000# Front, 20,000# Rear, Power Steering, A/C, 163" WB, Front, Rear, Driver Side Nozzles, Rear Hose Reel, Stk #1209807.....\$79,750

\$69,750

**2019
Yard
Spotter**



2019 Tico Raised Roof Yard Spotter, Cummins ISB 200 HP, Allison Automatic Transmission, Approx. 8,943 Hours, Steel Wheels, Power Steering, A/C, Road Package, Original White Finish, Stk #16990.....\$69,750

EXCEL TRUCK GROUP

www.exceltg.com



Albemarle, NC • (800) 438-2260
 Charlotte, NC • (704) 597-1110
 Chesapeake, VA • (757) 424-3000
 Chester, VA • (804) 768-4600
 Roanoke, VA • (540) 777-7700
 Weyers Cave, VA • (540) 234-0999



www.crookmotors.com

\$69,750



**2018
11'
Service
Body**

2018 Freightliner M2106 11' Knapheide Service Body, Cummins ISB 250 HP, Allison 2200RDS Auto Trans., Approx. 120,287 Miles, 8,000# Front, 21,000# Rear, 26,000# GVWR, Air Ride Susp., Steel Wheels, Power Steering, A/C, (3) Storage Bays Each Side, Diff Lock, Rear Hydraulic Outriggers, Stk #1212822.....\$69,750

\$59,750



**2016
Yard
Spotter**

2016 Ottawa 50 Raised Roof Yard Spotter, Cummins ISB 200 HP, Automatic Transmission, Approx. 14,621 Hours, Solid Susp., 12,000# Front, 24,000# Rear, Steel Wheels, 158" WB, Power Steering, Highway Package, Original White Finish, Stk #16989.....\$59,750

\$59,750



**2017
Yard
Spotter**

2017 Ottawa 50 Raised Roof Yard Spotter, Cummins ISB 200 HP, Automatic Transmission, Approx. 13,080 Hours, Solid Susp., 12,000# Front, 24,000# Rear, Steel Wheels, 115" WB, Power Steering, Highway Package, Original White Finish, Stk #16988.....\$59,750

\$59,750



**2013
2,000
Gallon
Water
Tank**

2013 Ford F750 2,000 Gallon Curry Water Tank, Cummins ISB6.7 200 HP, Automatic Transmission, Approx. 21,631 Miles, Spring Suspension, 12,000# Front, 21,000# Rear, P/S, A/C, 159" WB, (5) Sprayers, Rear Hose Reel, Stk #1234113.....\$59,750

\$39,750



**2016
M70
Moffett**

2016 Moffett M70, Hydrostatic Transmission, Approx. 1,392 Hours, Stk #1211438.....\$39,750

\$39,750



**2015
PB55
Princeton**

2015 Princeton PB55.3X, 12' Mast, Diesel Engine, Hydrostatic Trans., Approx. 842 Hours, Steel Wheels, 5,500# Capacity, Stk #17153.....\$39,750

EXCEL
TRUCK GROUP

CRUOK
MOTOR COMPANY
A DIVISION OF EXCEL
TRUCK GROUP



YOUR TRUCK & TRAILER PARTS PROVIDER

TOP INDUSTRY BRANDS

DELIVERY TO YOUR DOOR

OVER \$18 MILLION IN INVENTORY



EXCEL TRUCK GROUP

www.exceltg.com



Albemarle, NC • (800) 438-2260
Charlotte, NC • (704) 597-1110
Chesapeake, VA • (757) 424-3000
Chester, VA • (804) 768-4600
Roanoke, VA • (540) 777-7700
Weyers Cave, VA • (540) 234-0999

ROOK

MOTOR COMPANY

www.crookmotors.com

FLATBED BLOWOUT!

(2) 2025 Dorsey 48' Combo Flatbeds

Ultra Light Combo Flats,
All Aluminum Wheels,
Drop Chains,
Coil Package,
Toolbox



\$42,500

(2) 2024 Mac 53' Flatbed Trailers

Air Ride Spread Axle,
Rear Axle 60' From Rear
of Trailer, 11R22.5 Tires,
Aluminum Outside Wheels,
J Hooks, Coil Package,
Toolbox, Reduced Price
with FET



\$57,900

2023 Dorsey 48' Flatbed Trailer

Air Ride, Aluminum
Toolbox, (12) Winches,
FET Included



\$52,500

(3) 2023 Mac 48' Flatbed Trailers

Air Ride Spread Axle,
Road Warrior Flats, HD
60K Beams,
Hendrickson AAT 25
Suspension, Coil
Package, J Hooks, Outer
Aluminum Wheels,
11R22.5 Tires, Reduced
Price with FET



\$52,500

(6) 2024 Wabash 48' Flatbed Trailers

Air Ride Spread Axle,
Front Axle Lift,
Galvanized Suspension
Hangers, 11R22.5
Tires, Outside
Aluminum Wheels, Coil
Package, Toolbox,
Reduced Price with
FET



\$54,500

2023 Dorsey 48' Combo Flatbed

Ultra Light,
All Aluminum Wheels,
Drop Chains,
Coil Package,
Toolbox,
Reduced Price with
FET



\$41,500

EXCEL TRUCK GROUP

www.exceltg.com



Albemarle, NC • (800) 438-2260
 Charlotte, NC • (704) 597-1110
 Chesapeake, VA • (757) 424-3000
 Chester, VA • (804) 768-4600
 Roanoke, VA • (540) 777-7700
 Weyers Cave, VA • (540) 234-0999



www.crookmotors.com

\$112,900 Ea.

**NEW
2026
55-Ton
Low Boys**



(3) NEW 2026 Globe 55-Ton 53' x 102" Lowboy Trailers, Flip Axle Ready, 13 HP Honda Pony Motor, Boom and Bucket Well, (1) Red and (2) Black Finish, FET Included.....\$112,900 Ea.

\$89,500

**NEW
2026
60 Yard
Dump Trailer**



NEW 2026 Globe GTDD302-30-60YD Dump Trailer, Air Ride Suspension, Steel Floor, Electric Roll Tarp, Black Powder Coat, Roll Up Landing Gear, Stk #1246719.....\$89,500

\$83,900 Ea.

(3) NEW 2025 40' Dump Trailers



NEW 2025 Mac 40' Half Round Aluminum Dump Trailers, Air Ride Susp., Aero Kwik-Lock Roll Tarps, 64" Sides, 3/8" Liner, Stock #1230506, 1230507, 1230496\$83,900 Ea. FET Inc.

\$83,900

NEW 2024 Dump Trailer



NEW 2024 Mac Dump Trailer, Stock Air Ride Suspension, Tarp, Stk #1180186\$83,900 FET Inc.

\$57,900

2009 Tanker Trailer



2009 Heil Tanker Trailer, Air Ride Suspension, 4 Compartment, Up to Date Tank Inspections, Nice One Owner Trailer, Stk #1241989.....\$57,900

\$55,900 Ea.

(5) NEW 2024 48' Flatbed Trailers



(5) NEW 2024 Wabash 48' Flatbed Trailers, Spread Axle with Front Axle Lift, Aluminum Outside Wheels, J Channel, Toolbox, Coil Package, REDUCED PRICE.....\$55,900 Ea. FET

\$54,750

2014 48' Hydratail Trailer



2014 Landoll 48' x 102" Hydratail Trailer, Air Ride Suspension, 20,000# Winch, Wood/Steel Floor, 86,300# GVWR Stk #1242871.....\$54,750

\$52,500

2017 40' Half Round Steel Scrap Dump Trailer



2017 Mac 40' Half Round Steel Scrap Dump Trailer, Center Point Suspension, Electric Mesh Tarps, Stk #1123910\$52,500

EXCEL TRUCK GROUP

www.exceltg.com



Albemarle, NC • (800) 438-2260
 Charlotte, NC • (704) 597-1110
 Chesapeake, VA • (757) 424-3000
 Chester, VA • (804) 768-4600
 Roanoke, VA • (540) 777-7700
 Weyers Cave, VA • (540) 234-0999



www.crookmotors.com

\$52,500

2017 40' Half Round Steel Scrap Dump Trailer



2017 Mac 40' Half Round Steel Scrap Dump Trailer, Center Point Susp., Electric Mesh Tarps, Stk #1097329.....\$52,500

\$49,900

2016 40' Half Round Steel Scrap Dump Trailer



2016 MAC 40' Dump Trailer, Center Point Suspension, Aero Electric Tarp, Manhole Door in Front, Manual Barn Gate, 16" Pin, Stk #1130973.....\$49,900

\$47,500

2015 40' Half Round Steel Scrap Dump Trailer



2015 Mac 40' Half Round Steel Scrap Dump Trailer, Center Point Suspension, Electric Mesh Tarps, Nice Condition, Stk #1123565.....\$47,500

\$46,500

2015 40' Hopper



2015 Tempte 40' x 96" Hopper, Air Ride Suspension, 72" Sides, All Stainless, No Damage, Roll Over Tarp, Electric Over Manual Gates, Former Show Trailer, Very Little Use.....\$44,750

\$44,750

2016 48' x 102" Traveling Tail Trailer



2016 Trail-Eze TE80XT 48' x 102" Traveling Tail Trailer, Air Ride Susp, Hydraulic Winch, Stk #1228295.....\$44,750

\$42,500

2015 48' x 102" Hydratail Trailer



2015 Trail King TK80HST-482 48' x 102" Hydratail Trailer, Air Ride Suspension, 20,000# Hydraulic Winch, Stk#1217005.....\$42,500

\$41,900 Ea.

NEW 2026 Aluminum Vans



NEW 2026 Wabash Duraplate High Spec Vans, Air Ride Suspension, Tire Inflation, Skirts, 24K Floor, Lower Rub Rail, Full Duraplate Nose Liner.....\$41,900 FET Inc. Ea.

\$40,900 Ea.

NEW 2026 53' Aluminum Vans



NEW 2026 Wabash Duraplate 53' Vans, Air Ride Suspension, Tire Inflation, 24K Floor, Lower Rub Rail, Full Duraplate Nose Liner.....\$41,900 FET Inc. Ea.

\$38,900

2022 48' Flatbed Trailer



2022 Dorsey 48' Flatbed Trailer, Stk #1235552.....\$38,900

\$37,900

NEW 2026 53' Aluminum Van



NEW 2026 Wabash 53' Duraplate Aluminum Van, Air Ride Suspension, Full Height Nose Liner.....\$37,900 FET Inc.

EXCEL TRUCK GROUP

www.exceltg.com



Albemarle, NC • (800) 438-2260
 Charlotte, NC • (704) 597-1110
 Chesapeake, VA • (757) 424-3000
 Chester, VA • (804) 768-4600
 Roanoke, VA • (540) 777-7700
 Weyers Cave, VA • (540) 234-0999



www.crookmotors.com

\$32,500

2017 Reefer Trailer



2017 Utility Reefer Trailer, Stk #1192553.....\$32,500

\$32,500

2017 Reefer Trailer



2017 Wabash 53' Reefer Trailer, Stk #1183413.....\$34,500

\$32,500

2017 53' Reefer Trailer



2017 Utility 53' Reefer Trailer, Stk #1189779.....\$32,500

\$29,750

2010 53' x 102" Aluminum Van Trailer



2010 Kentucky 53' x 102" Aluminum Van Trailer, Air Ride Suspension, Trans Roof, Vertical Log Post, Sliding Loading Platform, Under Trailer Storage (4) Curbside Doors, (2) Road Side Doors, Swing Rear Door, Stk #T8385.....\$29,750

\$29,750

2014 48' x 99" Container Trailer



2014 Lucon 48' x 99" Container Trailer, Pony Motor, 2-Speed Landing Gear, (1) Steel Storage Box, (6) Winches, Stk #1231144.....\$29,750

\$29,500

2022 53' Aluminum Van Trailer



2022 Wabash 53' Aluminum Van Trailer, Stk #1131159.....\$29,500

\$29,500

2022 53' Aluminum Van Trailer



2022 Wabash 53' Aluminum Van Trailer, Stk #1131171.....\$29,500

\$29,500

2022 53' Aluminum Van Trailer



2022 Wabash 53' Aluminum Van Trailer, Stk #1131167.....\$29,500

\$28,900

2016 53' Reefer Trailer



2016 Utility 53' Reefer Trailer, Stk #1184876.....\$28,900

\$27,900

2020 48' Flatbed Trailer



2020 Transcraft 48' Flatbed Trailer, Stk #1000559.....\$27,900

\$22,500

2016 Log Trailer



2016 McLendon Log Trailer, Stk #1238898.....\$22,500

\$21,900

2020 53' Dry Van Trailer



2014 Hyundai 53' Dry Van Trailer, Air Ride Suspension, Skirts, Very Clean Trailer,\$21,900

EXCEL TRUCK GROUP

www.exceltg.com



Albemarle, NC • (800) 438-2260
 Charlotte, NC • (704) 597-1110
 Chesapeake, VA • (757) 424-3000
 Chester, VA • (804) 768-4600
 Roanoke, VA • (540) 777-7700
 Weyers Cave, VA • (540) 234-0999



www.crookmotors.com

\$18,500

2013 48' Flatbed Trailer



2013 Benson 48' Flatbed Trailer, Stk #1171836.....\$18,500

\$18,500

2014 48' Flatbed Trailer



2014 Great Dane 48' Flatbed Trailer, Stk #1207331.....\$18,500

\$18,500

2015 Flatbed Trailer



2015 Great Dane 48' Flatbed Trailer, Stk #1207410.....\$18,500

\$16,900

2015 53' Van Trailer



2015 Wabash 53' x 102" Duraplate Van Trailer, Air Ride Susp., Aluminum Roof, Vertical Logistics, Swing Door, Stk #1230938.....\$16,900

\$16,500

2012 48' Flatbed Trailer



2012 Great Dane 48' Flatbed Trailer, Stk #1207404.....\$16,500

\$15,500

2005 45' Open Top Trailer



2005 Peerless 45' x 96" Open Top Trailer, Spring Suspension, 65,000# GVWR, Roll Tarp, 2-Speed Landing Gear, Stk #1240680.....\$15,500

\$14,500

2005 48' Aero Slide Tarp Trailer



2005 Great Dane 48' Flatbed Trailer w/ Aero Slide Tarp Trailer, (12) Winches, (10) Straps, Stk #1217024.....\$14,500

\$14,500

2013 53' Aluminum Van Trailer



2013 Great Dane 53' Aluminum Van Trailer Stk #1179149.....\$14,500

\$12,500

2013 53' Aluminum Van Trailer



2013 Utility 53' Aluminum Van Trailer Stk #1155664.....\$12,500

\$10,500

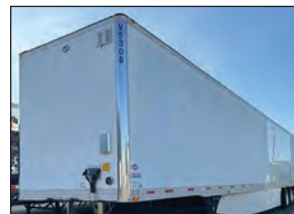
2009 53' Aluminum Van Trailer



2009 Wabash 53' x 102" Aluminum Van Trailer, Air Ride, Wood Floor, Log Post, Swing Door, Stk #T8305.....\$10,500

\$10,500

2010 53' Van Trailer



2010 Utility 53' Aluminum Van Trailer, Stk #1144884.....\$10,500

\$7,500

2008 53' Aluminum Van Trailer



2008 Trailmobile 53' Aluminum Van Trailer, Stk #1188812.....\$7,500

EXCEL
TRUCK GROUP®

CRUOK
MOTOR COMPANY
A DIVISION OF EXCEL
TRUCK GROUP

Service Specials

EXCELTRUCKGROUP.COM | EXPIRES 5/31/25



SPRING AC PERFORMANCE CHECK

\$240

Perform complete performance check on HVAC system, checking and recording charge level, high and low side pressure readings, duct temp, belt integrity, system operation, and filter status.

SPRING AC REPAIR SPECIAL

\$160/HR

Repairs performed on any items found during the AC Performance check.

STARTING/CHARGING SYSTEM HEALTH CHECK

\$320

Includes cleaning battery connections, testing batteries, testing starter and alternator cable voltage drops, testing alternator voltage and amperage output, and checking alternator drive belt.

COOLANT SYSTEM FLUSH

\$240 + coolant

Pressure test cooling system and check for leaks, drain and fill cooling system with new coolant. Price will vary depending on type and quality of coolant required for vehicle.

CLUTCH SPECIAL

\$160/HR

Clutch replacement. Repair time will vary depending on application.

EXCEL TRUCK GROUP

www.exceltg.com



Albemarle, NC • (800) 438-2260
 Charlotte, NC • (704) 597-1110
 Chesapeake, VA • (757) 424-3000
 Chester, VA • (804) 768-4600
 Roanoke, VA • (540) 777-7700
 Weyers Cave, VA • (540) 234-0999



www.crookmotors.com

\$139,750

2022 Western Star 49X Tandem Axle Day Cab, Detroit DD16 560 HP, FRO-18210C 10-Speed OD Transmission, Approx. 235,530 Miles, Air Ride Suspension, 12,000# Front, 46,000# Rear, All Aluminum Wheels, P/S, A/C, 220" WB, Aluminum Headache Rack, SS Visor, Full Locking Rears, Stk #1230787.....\$139,750



2022
Tandem
Axle
Day
Cab

\$139,750

2017 Kenworth T880 Tri-Axle Day Cab, Cummins X15 525 HP, RTLO-18918B 18-Speed Transmission, Approx. 367,443 Miles, Air Ride Suspension, 18,740# Front, 46,000# Rear, 80,000# GVWR, 20,000# Lift Axle, Aluminum Wheels, Power Steering, A/C, Aluminum Tanks, Stk #1234108.....\$139,750



2017
Tri-Axle
Day
Cab

\$139,750

2015 Kenworth T800 Tandem Axle Day Cab with Palfinger Boom, Cummins ISX15 485 HP, RTLO-16913A 13-Speed Transmission, Approx. 174,245 Miles, Air Ride Suspension, 18,740# Front, 40,000# Rear, 58,740# GVWR, Aluminum Wheels, Power Steering, A/C, Aluminum Headache Rack, Full Locking Rears, (4) Outriggers, Aluminum Tank, Stk #1243902.....\$129,750



2015
Tandem Axle
Day Cab
with
Palfinger
Boom

EXCEL TRUCK GROUP

www.exceltg.com



Albemarle, NC • (800) 438-2260
 Charlotte, NC • (704) 597-1110
 Chesapeake, VA • (757) 424-3000
 Chester, VA • (804) 768-4600
 Roanoke, VA • (540) 777-7700
 Weyers Cave, VA • (540) 234-0999



www.crookmotors.com

\$109,500

**2020
Tandem
Axle
Day
Cab**



2020 Kenworth T880 Tandem Axle Day Cab, Cummins X15 485 HP, **Allison 4500RDS Automatic Transmission**, Approx. 361,579 Miles, Air Ride Suspension, **13,200# Front, 46,000# Rear, 59,200# GVWR**, Power Steering, A/C, 208" WB, Headache Rack w/Toolbox, Full Locking Rears, Chrome Visor, **Stk #1243525.....\$109,500**

\$96,750

**2019
Tandem
Axle
Day
Cab**



2019 Peterbilt 579 Tandem Axle Day Cab, Cummins X15 450 HP, **Ultrasift Automatic Transmission**, Approx. 171,608 Miles, Air Ride Suspension, 12,000# Front, 38,000# Rear, Aluminum Wheels, Power Steering, A/C, 194" WB, Dual Line Wet Kit, Headache Rack, Chrome Visor, **Stk #1236154.....\$96,750**

\$96,750

**2020
Tandem
Axle
Day
Cab**



2020 Freightliner PE116064ST Tandem Axle Day Cab, Detroit DD13 470 HP, **DT12 Automatic Transmission**, Approx. 207,832 Miles, Air Ride Susp., **12,350# Front, 40,000# Rear, 52,350# GVWR**, Aluminum Wheels, P/S, A/C, 208" WB, 2-Way Wet Line, Aluminum Headache Rack w/Beacon Light, (1) Step Storage Box, SS Half Fenders, Painted Visor, **Stk #1061544.....\$96,750**

\$94,750

**2020
Tandem
Axle
Day
Cab**



2020 Peterbilt 579 Tandem Axle Day Cab, Paccar MX13 455 HP, **Eaton Automatic Transmission**, Approx. 139,828 Miles, Air Ride Suspension, 12,000# Front, 38,000# Rear, Aluminum Wheels, Power Steering, A/C, 192" WB, Dual Line Wet Kit, Headache Rack, Aluminum Half Fenders, **Stk #1240136.....\$94,750**

\$94,750

**2017
Tandem
Axle
Day
Cab**



2017 Mack CHU613 Tandem Axle Day Cab, Mack MP8 505 HP, **M-Drive Automatic Transmission**, Approx. 317,459 Miles, Air Ride Suspension, **14,320# Front, 46,000# Rear, 60,320# GVWR**, Aluminum Wheels, Power Steering, A/C, 211" WB, Dual Line Wet Kit with Cab Controls for Dump, Interaxle/Diff Lock, **Stk #1239781.....\$94,750**

\$89,750

**2018
Tandem
Axle
Day
Cab**



2018 Freightliner PX125064ST Tandem Axle Day Cab, Detroit DD13 450 HP, **Eaton Fuller Advantage Automatic Transmission**, Approx. 182,490 Miles, Air Ride Suspension, **14,600# Front, 40,000# Rear**, Power Steering, A/C, 193" WB, 2-Way Wet Line, Aluminum Headache Rack w/Beacon Light, **Stk #1243082.....\$89,750**

EXCEL TRUCK GROUP

www.exceltg.com



Albemarle, NC • (800) 438-2260
 Charlotte, NC • (704) 597-1110
 Chesapeake, VA • (757) 424-3000
 Chester, VA • (804) 768-4600
 Roanoke, VA • (540) 777-7700
 Weyers Cave, VA • (540) 234-0999



www.crookmotors.com

\$89,750



**2018
Tandem
Axle
Day
Cab**

2018 Freightliner PX125064ST Tandem Axle Day Cab, Cummins X15 450 HP, FO-16E313A-MHP Ultrashift Transmission, Approx. 160,538 Miles, Air Ride Suspension, 12,000# Front, 40,000# Rear, All Aluminum Wheels, Power Steering, A/C, 194" WB, Aluminum Headache Rack 1/Beacon Light, 2-Way Wet Line, SS Half Fenders, Stk #1080673.....\$89,750

\$89,750



**2019
Tandem
Axle
Day
Cab**

2019 Peterbilt 579 Tandem Axle Day Cab, Cummins X15 450 HP, Automatic Transmission, Approx. 205,497 Miles, Air Ride Suspension, 12,000# Front, 38,000# Rear, Aluminum Wheels, Power Steering, A/C, 193" WB, 2-Way Wet Kit, Headache Rack, Beacon Light, (1) Step Storage Box, SS Half Fenders, SS Visor, Stk #1239994.....\$89,750

\$89,750



**2018
Tandem
Axle
Day
Cab**

2018 Freightliner PX125064ST Tandem Axle Day Cab, Cummins X15 450 HP, FO-16E313A-MHP Ultrashift Transmission, Approx. 196,754 Miles, Air Ride Suspension, 12,000# Front, 40,000# Rear, All Aluminum Wheels, Power Steering, A/C, 194" WB, Aluminum Headache Rack, 2-Way Wet Line, Aluminum Half Fenders, (1) Aluminum Step/Storage Box, Stk #1232848.....\$89,750

\$89,500



**2019
Tandem
Axle
Day
Cab**

2019 Freightliner PE116064ST Tandem Axle Day Cab, Detroit DD13 470 HP, DT12 Automatic Transmission, Approx. 189,116 Miles, Air Ride Suspension, 12,500# Front, 40,000# Rear, Aluminum Wheels, Power Steering, A/C, 210" WB, Dual Line Wet Kit, Headache Rack, Dual Aluminum Tanks. Stk #1010552.....\$89,500

\$89,500



**2020
Tandem
Axle
Day
Cab**

2020 Kenworth T880 Tandem Axle Day Cab, Paccar MX13 455 HP, Allison 4500RDS Automatic Transmission, Approx. 341,149 Miles, Air Ride Suspension, 12,500# Front, 40,000# Rear, Aluminum Wheels, Power Steering, A/C, 200" WB, Single Line Wet Kit w/ In-Cab Controls, Headache Rack, Stk #1243854.....\$89,500

\$69,750



**2017
Tandem
Axle
Day
Cab**

2017 Freightliner PX125064ST Tandem Axle Day Cab, Detroit DD13 450 HP, 10-Speed OD Transmission, Approx. 105,235 Miles, Air Ride Suspension, 14,600# Front, 40,000# Rear, Power Steering, A/C, 210" WB, 2-Way Wet Line, Aluminum Headache Rack w/ Beacon Light, Stk #1215521.....\$69,750

EXCEL TRUCK GROUP

www.exceltg.com



Albemarle, NC • (800) 438-2260
 Charlotte, NC • (704) 597-1110
 Chesapeake, VA • (757) 424-3000
 Chester, VA • (804) 768-4600
 Roanoke, VA • (540) 777-7700
 Weyers Cave, VA • (540) 234-0999



www.crookmotors.com

\$69,750

**2017
Tandem
Axle
Day
Cab**



2017 Freightliner Cascadia 125 Tandem Axle Day Cab, Cummins X15, FO16E313A-MHP Automatic Transmission, Approx. 217,000 Miles, Air Ride Suspension, 12,000# Front, 40,000# Rear, 52,000# GVWR, Power Steering, A/C, 194" WB, Wet Kit, Aluminum Headache Rack, Stk #1080746.....\$69,750

\$59,750

**2018
Tandem
Axle
Day
Cab**



2018 Freightliner CA113DC Tandem Axle Day Cab, Detroit DD13 470 HP, DT12 Automatic Transmission, Approx. 314,971 Miles, Air Ride Suspension, 12,000# Front, 40,000# Rear, Power Steering, A/C, 190" WB, Stk #1235200.....\$59,750

\$59,750

**2021
Tandem
Axle
Day
Cab**



2021 Freightliner PE116064ST Tandem Axle Day Cab, Detroit DD13 450 HP, DT12 Auto Transmission, Approx. 225,230 Miles, Air Ride Suspension, 12,500# Front, 40,000# Rear, Aluminum Wheels, Power Steering, A/C, 158" WB, Air Ride Cab, Stk #1241438.....\$59,750

\$59,750

**2021
Tandem
Axle
Day
Cab**



2021 Freightliner PE116064ST Tandem Axle Day Cab, Detroit DD13 450 HP, DT12 Auto Transmission, Approx. 245,798 Miles, Air Ride Suspension, 12,500# Front, 40,000# Rear, Aluminum Wheels, Power Steering, A/C, 158" WB, Air Ride Cab, Stk #1241437.....\$59,750

\$56,750

**2019
Tandem
Axle
Day
Cab**



2019 Mack Anthem 64T Tandem Axle Day Cab, Mack MP8 415 HP, M-Drive Automatic Transmission, Approx. 391,385 Miles, Air Ride Suspension, 12,000# Front, 40,000# Rear, Aluminum Wheels, Power Steering, A/C, Diff Lock, Stk #1004877.....\$56,750

\$49,750

**2017
Tandem
Axle
Day
Cab**



2017 Freightliner CA125DC Tandem Axle Day Cab, Detroit DD13 455 HP, DT12 Automatic Transmission, Approx. 275,198 Miles, Air Ride Suspension, 12,000# Front, 40,000# Rear, Power Steering, A/C, 190" WB, Toolbox Behind Cab, Dual 100 Gallon Aluminum Tanks, Stk #1239744.....\$49,750

EXCEL TRUCK GROUP

www.exceltg.com



Albemarle, NC • (800) 438-2260
 Charlotte, NC • (704) 597-1110
 Chesapeake, VA • (757) 424-3000
 Chester, VA • (804) 768-4600
 Roanoke, VA • (540) 777-7700
 Weyers Cave, VA • (540) 234-0999



www.crookmotors.com

\$49,750

2019 Tandem Axle Day Cab



2019 Freightliner PT126064ST Tandem Axle Day Cab, Detroit DD15 455 HP, DT12 Automatic Transmission, Approx. 262,035 Miles, Air Ride Suspension, 12,000# Front, 40,000# Rear, Power Steering, A/C, 180" WB, Full Top Fairing, Cab Step Fairing, Stk #1239742.....\$54,750

\$49,750

2016 Tandem Axle Day Cab



2016 Western Star 4700SB Tandem Axle Day Cab, Detroit DD13 450 HP, FRO-16210C 10-Speed OD Transmission, Approx. 130,896 Miles, 12,000# Front, 40,000# Rear, Air Ride Suspension, 172" WB, Diff and Inter Axle Lock, Stk #1225973.....\$49,750

\$49,750

2012 Tandem Axle Day Cab



2012 Kenworth T800 Tandem Axle Day Cab, Cummins ISX15 485 HP, FRO-16210C 10-Speed Trans, Approx. 593,791 Miles, Air Ride Susp., 12,350# Front, 40,000# Rear, Aluminum Wheels, P/S, A/C, 198" WB, Stk #1206449.....\$49,750

\$49,750

2016 Tandem Axle Day Cab



2016 Freightliner Cascadia 125 Tandem Axle Day Cab, Detroit DD13, FRO-16210C 10-Speed Transmission, Approx. 317,705 Miles, Air Ride Suspension, 12,000# Front, 40,000# Rear, Power Steering, A/C, 204" WB, Wet Line Kit, Stk #1209351.....\$54,750

\$46,500

2014 Tandem Axle Day Cab



2014 Freightliner PX125064ST Tandem Axle Day Cab, Detroit DD13 470 HP, FRO-16210C 101-Speed OD Trans., Approx. 244,586 Miles, Air Ride Susp., 13,300 Front, 40,000# Rear, 53,300# GVWR, P/S, A/C, 190" WB, Tank Fairings, Painted Visor, Stk #1242613.....\$46,500

\$46,500

2018 Tandem Axle Day Cab



2018 Freightliner CA125DC Tandem Axle Day Cab, Detroit DD15 455 HP, DT12 Auto Trans., Approx. 213,718 Miles, Air Ride Susp., 12,000# Front, 40,000# Rear, Aluminum Wheels, Power Steering, A/C, 178" WB, Heated/Vented Seats, Stk #1239739.....\$46,500

\$46,500

2018 Tandem Axle Day Cab



2018 Freightliner PT12064ST Tandem Axle Day Cab, Detroit DD13 450 HP, DT12 Auto Trans., Approx. 204,226 Miles, Air Ride Susp., 12,000# Front, 40,000# Rear, Steel Wheels, Power Steering, A/C, 180" WB, Small Top Fairing, Stk #1239743.....\$46,500

\$44,750

2015 Tandem Axle Day Cab



2015 Freightliner PX125064ST Tandem Axle Day Cab, Detroit DD13 450 HP, FRO-16210C 10-Speed Trans., Approx. 372,383 Miles, Air Ride Suspension, 12,000# Front, 40,000# Rear, P/S, A/C, 204" WB, 2-Line Wet Kit, Headache Rack, Strobe, Stk #1202910.....\$44,750

\$42,750

2015 Single Axle Day Cab



2015 Freightliner PX125042S Single Axle Day Cab, Detroit DD13 410 HP, DT12 Automatic Transmission, Approx. 98,635 Miles, Air Ride Suspension, 12,000# Front, 20,000# Rear, P/S, A/C, 166" WB, Small Top Fairing, Dual Aluminum Tanks, Stk #1244820.....\$42,750

EXCEL TRUCK GROUP

www.exceltg.com



Albemarle, NC • (800) 438-2260
 Charlotte, NC • (704) 597-1110
 Chesapeake, VA • (757) 424-3000
 Chester, VA • (804) 768-4600
 Roanoke, VA • (540) 777-7700
 Weyers Cave, VA • (540) 234-0999



www.crookmotors.com

\$39,750

2012 Tandem Axle Day Cab



2012 Freightliner PX125064ST Tandem Axle Day Cab, Detroit DD13 435 HP, FRO-15210C 10-Speed OD Trans., Approx. 335,955 Miles, Air Ride Susp., 12,000# Front, 40,000# Rear, Power Steering, A/C, 178" WB, Painted Visor, Stk #1054578.....\$39,750

\$39,750

2016 Single Axle Day Cab



2016 Freightliner PX125042ST Single Axle Day Cab, Detroit DD13 410 HP, DT12 Automatic Transmission, Approx. 137,256 Miles, Air Ride Susp., 12,000# Front, 20,000# Rear, Power Steering, A/C, 166" WB, Small Top Shield, Stk #1244818.....\$39,750

\$39,750

2015 Tandem Axle Day Cab



2015 Freightliner PX125064ST Tandem Axle Day Cab, Detroit DD13 450 HP, FRO-16210B 10-Speed Trans., Approx. 481,216 Miles, Air Ride Susp., 14,700# Front, 40,000# Rear, Power Steering, A/C, 186" WB, Dual Line Wet Kit, Headache Rack, Stk #1209624.....\$39,750

\$29,750

2017 Tandem Axle Day Cab



2017 Freightliner Cascadia 125 Tandem Axle Day Cab, Detroit DD13 505 HP, DT12 Auto Trans., Air Ride Susp., 12,000# Front, 40,000# Rear, Power Steering, A/C, 175" WB, Stk #1122858.....\$29,750

\$28,750

2013 Tandem Axle Day Cab



2013 Freightliner Cascadia 125 Tandem Axle Day Cab, Detroit DD15, FRO-16210C 10-Speed Trans., Approx. 669,057 Miles, Air Ride Susp., 12,000# Front, 40,000# Rear, P/S, A/C, 190" WB, Stk #1001716.....\$28,750

\$26,500

2018 Single Axle Day Cab



2015 Mack CXU612 Single Axle Day Cab, Mack MP7 395 HP, 10-Speed Trans., Approx. 660,383 Miles, Air Ride Susp., 12,000# Front, 23,000# Rear, Alum/Steel Wheels, P/S, A/C, 170" WB, Stk #1076132.....\$26,500

As-Is Manager's Specials

Units Sold As-Is, Where Is • Call Any of Our Locations for More Information

- 2015 Freightliner Cascadia 125 Mid-Roof Sleeper, Bad Engine, Tow Away, Stk #1000769.....\$3,000
- 2013 Freightliner CA1 25 Condo Sleeper, Bad Engine, Tow Away, Stk #1040108.....\$5,000
- 2005 Peterbilt 335 Tandem Axle Flatbed, Bad Engine, Tow Away, Stk #1233832.....\$12,500
- 2006 Volvo VNL High Rise Sleeper, Pre-Emissions, Stk #1236629.....\$12,750



EXCEL **FLEET CHOICE**

BUILT FOR UPTIME PRICED FOR SAVINGS

PARTS TESTED TO MEET OE SPECS | 1 YEAR WARRANTY

EXCELTRUCKGROUP.COM

EXCEL TRUCK GROUP

www.exceltg.com



Albemarle, NC • (800) 438-2260
 Charlotte, NC • (704) 597-1110
 Chesapeake, VA • (757) 424-3000
 Chester, VA • (804) 768-4600
 Roanoke, VA • (540) 777-7700
 Weyers Cave, VA • (540) 234-0999



www.crookmotors.com

\$329,000

**2022
 14'
 Custom
 Sleeper**



2022 Peterbilt 389 14' Custom Sleeper, Cummins 600 HP, **18-Speed Automatic Transmission**, **Approx. 161,899 Miles**, **Air Ride Suspension**, **14,600# Front**, **40,000# Rear**, **54,600# GVWR**, Aluminum Wheels, **Power Steering**, **A/C**, **355" WB**, **King Size Bed**, Cummins Generator, Shower, Toilet, Sink, Stove, TV, Microwave, Fridge/Freezer, GPS, (2) SS Storage Boxes, Doubled Frame Rails, Full Fenders, Chrome Stacks, SS Air Cleaners, Dual 150 Gallon Aluminum Tanks, **Stk #1168210**.....
\$329,000

\$149,500

**2015
 38"
 Mid Roof
 Sleeper**



2015 Kenworth T800 Tri-Axle 38" Mid Roof Sleeper, Cummins ISX15 600 HP, RTLO-18918B 18-Speed Transmission, **Approx. 284,669 Miles**, **Air Ride Suspension**, **20,000# Front**, **46,000# Rear**, **Lift Axle**, Aluminum Wheels, **Dual Power Steering**, **A/C**, **247" WB**, **Headache Rack w/ (3) Storage Compartments**, Full Locking Rears, SS Half Fenders, Double Frame, Dual SS Breathers, **Stk #1234135**.....
\$149,500

\$99,500

**2011
 70"
 Raised
 Roof
 Sleeper**



2011 Freightliner Coronado 132 70" Raised Roof Sleeper, (2) Bunks, Detroit DD16 560 HP, RTLO-229183A 13-Speed Transmission, **Approx. 387,631 Miles**, 12,000# Front, 40,000# Rear, **Air Ride Suspension**, 270" WB, P/S, A/C, Thermo King Bunk Heater, Chrome Hood Breathers, Chrome Visor, Dual 150 Gallon Aluminum Tanks, **Stk #2055287**.....
\$99,500

EXCEL TRUCK GROUP

www.exceltg.com



Albemarle, NC • (800) 438-2260
 Charlotte, NC • (704) 597-1110
 Chesapeake, VA • (757) 424-3000
 Chester, VA • (804) 768-4600
 Roanoke, VA • (540) 777-7700
 Weyers Cave, VA • (540) 234-0999



www.crookmotors.com

\$99,500



**2011
70"
Raised
Roof
Sleeper**

2011 Freightliner Coronado 132 70" Raised Roof Sleeper, (2) Bunks, Detroit DD16 500 HP, RTLO-229188 18-Speed Transmission, Approx. 438,297 Miles, **12,500# Front, 40,000# Rear, Air Ride Suspension, 300" WB, P/S, A/C, Thermo King APU, Chrome Hood Vents, Chrome Visor, Dual 150 Gallon Aluminum Tanks, Stk #1027311.....\$99,500**

\$59,500



**2021
80"
Raised
Roof
Sleeper**

2021 Peterbilt 579 80" Raised Roof Sleeper, (2) Bunks, Cummins X15 400 HP, **Auto-matic Transmission**, Approx. 500,532 Miles, **13,200# Front, 40,000# Rear, Air Ride Suspension, 238" WB, P/S, A/C, Refrigerator, Tank Fairings, Stk #1149425.....\$59,500**

\$59,500



**2020
72"
Condo
Sleeper**

2020 Freightliner Cascadia 125 72" Condo Sleeper, (2) Bunks, Detroit DD15 455 HP, **DT12 Automatic Transmission**, Approx. 498,022 Miles, **13,300# Front, 40,000# Rear, Air Ride Suspension, 228" WB, Power Steering, A/C, Park Smart APU, Power Inverter, Stk #1239485.....\$59,500**

\$59,500



**2020
72"
Raised
Roof
Sleeper**

2020 Freightliner Cascadia 125 72" Raised Roof Sleeper, (2) Bunks, Detroit DD15 455 HP, **DT12 Automatic Transmission**, Approx. 503,598 Miles, **13,300# Front, 40,000# Rear, Air Ride Suspension, 228" WB, P/S, A/C, Park Smart APU, Power Inverter, Stk #1239486.....\$59,500**

\$59,500



**2021
80"
Raised
Roof
Sleeper**

2021 Peterbilt 579 80" Raised Roof Sleeper, (2) Bunks, Cummins X15 400 HP, **Auto-matic Transmission**, Approx. 527,171 Miles, **13,200# Front, 40,000# Rear, Air Ride Suspension, 238" WB, P/S, A/C, Refrigerator, Tank Fairings, Cab Extender Fairings, Stk #1159701.....\$59,500**

\$52,500



**2021
80"
Raised
Roof
Sleeper**

2021 Peterbilt 579 80" Raised Roof Sleeper, (2) Bunks, Cummins X15 400 HP, **Auto-matic Transmission**, Approx. 586,066 Miles, **13,200# Front, 40,000# Rear, Air Ride Suspension, 238" WB, P/S, A/C, Refrigerator, Tank Fairings, Cab Extender Fairings, Stk #1137587.....\$52,500**

EXCEL TRUCK GROUP

www.exceltg.com



Albemarle, NC • (800) 438-2260
 Charlotte, NC • (704) 597-1110
 Chesapeake, VA • (757) 424-3000
 Chester, VA • (804) 768-4600
 Roanoke, VA • (540) 777-7700
 Weyers Cave, VA • (540) 234-0999



www.crookmotors.com

\$49,750

**2019
73"
Raised
Roof
Sleeper**



\$49,750

**2019
73"
Raised
Roof
Sleeper**



2019 International LT625 73" Raised Roof Sleeper, (2) Bunks, Cummins X15 450 HP, Auto Trans., Approx. 382,409 Miles, 13,200# Front, 40,000# Rear, Air Ride Susp., 234" WB, P/S, A/C, Espar Bunk Heater, Stk #1239747.....\$49,750

2019 International LT625X4 73" Raised Roof Sleeper, (2) Bunks, Cummins X15 450 HP, Auto Trans., Approx. 375,418 Miles, 13,200# Front, 40,000# Rear, Air Ride Suspension, 234" WB, P/S, A/C, Carrier Comfort Pro APU, Stk #1239746.....\$49,750

\$42,750

**2016
40"
Mid Roof
Sleeper**



\$36,750

**2018
72"
Condo
Sleeper**



2016 Western Star 5700XESLP 40" Mid Roof Sleeper, Detroit DD15 475 HP, DT12 Automatic Transmission, Approx. 381,382 Miles, 12,500# Front, 40,000# Rear, 52,500# GVWR, Air Ride Suspension, 224" WB, P/S, A/C, Idle Free APU, Dual 120 Gallon Aluminum Tanks, Stk #1243675.....\$42,750

2018 Freightliner PX125064ST 72" Condo Sleeper, (2) Bunks, Detroit DD15 455 HP, Eaton Fuller Automatic Transmission, Approx. 782,042 Miles, 12,000# Front, 40,000# Rear, 52,000# GVWR, Air Ride Suspension, 228" WB, P/S, A/C, Comfort Pro APU, Dual 120 Gallon Aluminum Tanks, Stk #1239745.....\$36,750

\$31,500

**2013
High
Rise
Sleeper**



\$12,750

**2006
60"
Condo
Sleeper**



2013 Freightliner Coronado Glider High Rise Sleeper, Detroit Series 60, 10-Speed Transmission, Approx. 1,027,498 Miles, 12,000# Front, 40,000# Rear, 52,000# GVWR, Air Ride Suspension, 265" WB, P/S, A/C, Dual 150 Gallon Aluminum Tanks, Stk #1246825.....\$31,500

2006 Volvo VNL 60" Condo Sleeper, Volvo D12 465 HP, FRLO-16410C 10-Speed Transmission, Approx. 639,849 Miles, 12,000# Front, 40,000# Rear, Air Ride Suspension, 224" WB, Single Bunk, Sold As-Is, Stk #1236629.....\$12,750

EXCEL
TRUCK GROUP®

ROOK
MOTOR COMPANY
A DIVISION OF EXCEL
TRUCK GROUP

Mobile Onsite Service

Bring our Experts to You

When you bring our technician to you, you don't have to worry about shop wait times. Schedule maintenance and repairs during your truck's normal downtime, and maximize uptime!



VA

Roanoke, VA - (800) 849-8823

Truck Service

Robert Songer: (540) 798-9527 rsonger@exceltg.com

 Andrew Moran: (540) 798-0656 dmoran@exceltg.com

Trailer Service

Austin Hobgood: (540) 795-9526 ahobgood@exceltg.com

Steven Humphrey: (540) 520-6770 shumphrey@exceltg.com

Chester, VA - (800) 849-9227

Truck Service

Ryan Mullins: (804) 920-6365 rymullins@exceltg.com


 Justin Bradley: (804) 839-0603 jbradley@exceltg.com

Trailer Service

Luke Harris (540) 988-2947 lharris@exceltg.com

Weyers Cave, VA - (888) 888-9407

Truck Service

 Michael Kling: (540) 988-2981 mkling@exceltg.com

Trailer Service

Ted Hulse: (540) 355-1312 thulse@exceltg.com

Tony Schmidt: (540) 908-5940 tschmidt@exceltg.com

Fredericksburg, VA - (888) 230-1514

Truck Service

Bryan Martin: (540) 684-4014 bmartin@exceltg.com

Chesapeake, VA - (800) 766-8785

Truck Service

William Barrett: (804) 920-6318 wbarrett@exceltg.com

Glen Allen, VA - (866) 422-8782

Truck Service

Ryan Mullins: (804) 920-6365 rymullins@exceltg.com

NC

Charlotte, NC - (800) 277-1038

Truck Service

Dallas Bare: (980) 297-9011 dcbare@exceltg.com

Noah McNeilly: (980) 867-1211 nmcneilly@exceltg.com

Alston Davidson: (704) 388-1039 adavidson@exceltg.com

Statesville, NC - (844) 433-9235

Truck Service

Trevor Aldridge: (336) 469-2606 taldridge@exceltg.com

Levi Fox: (704) 928-5381 lfox@exceltg.com

Crook Motor Co. - (800) 438-2260

Truck Service

Hunter Williams: (980) 266-0508 hawilliams@crookmotors.com

SC

Columbia, SC - (877) 376-4455

Truck Service

Glen Bunch: (803) 638-0009 gbunch@exceltg.com

Lexington, SC - (800) 380-3063

Truck Service

 Bobby Heartfield: (803) 687-7390 bheartfield@exceltg.com

Rock Hill, SC - (803) 576-3900

Truck Service

David Wallace: (704) 680-2016 dwallace@exceltg.com

Crook Motor Company
 PO Box 1060
 Albemarle, NC 28002

PRSR STD
 US Postage
 PAID
 Crook Motor Co.

ELECTRONIC SERVICE REQUESTED

EXCEL TRUCK GROUP

ROOK MOTOR COMPANY



**Your Destination for Parts, Service & Sales
 in Virginia and the Carolinas!**

Albemarle, NC
 1483 HWY 52 North
 (800) 438-2260



Charlotte, NC
 4633 Equipment Dr
 (704) 597-1110



Chesapeake, VA
 821 Curtis Saunders Ct
 (757) 424-3000



Chester, VA
 901 W. Hundred Rd
 (804) 768-4600



Columbia, SC
 2790 Shop Rd
 (803) 376-4455



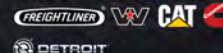
Fredericksburg, VA
 3400 Lee Hill Dr
 (888) 230-1514



Glen Allen, VA
 11102 Washington HWY
 (804) 798-2906



Lexington, SC
 1828 Two Notch Rd
 (803) 359-0950



Roanoke, VA
 267 Lee HWY
 (540) 777-7700



Rock Hill, SC
 1170 Porter Rd
 (803) 576-3900



Statesville, NC
 2221 International Dr
 (704) 252-5400



Weyers Cave, VA
 3243 Lee HWY
 (540) 234-0999

